

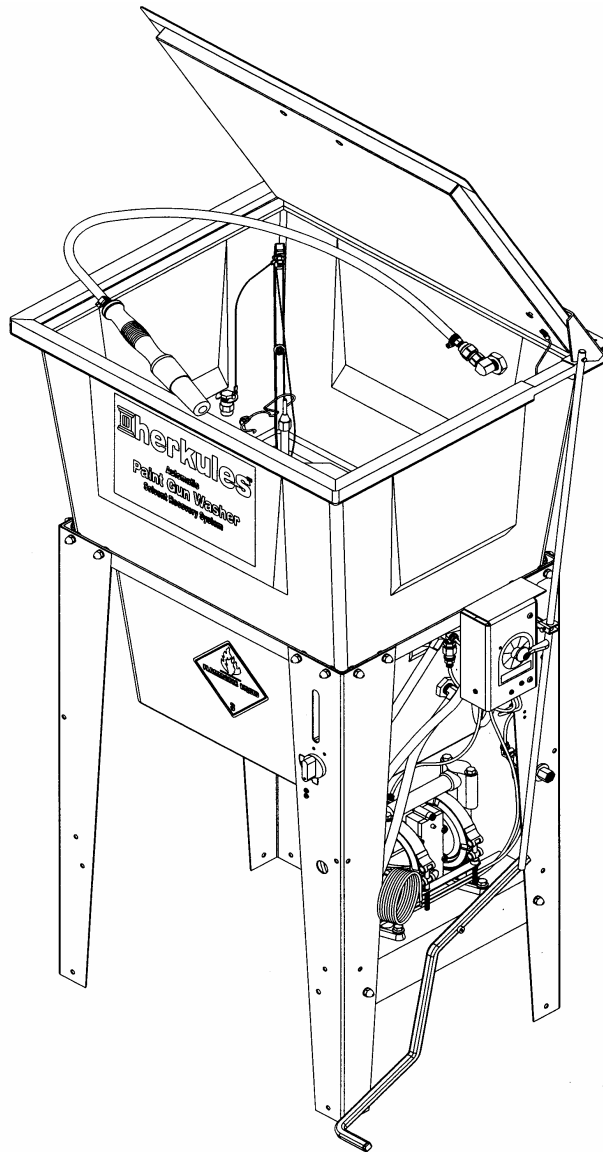
## G202

### OWNERS MANUAL



#### INSTRUCTIONS

This manual contains important information concerning the installation and operation of the gun washers listed above. Read manual thoroughly and keep for future reference



Herkules Equipment Corporation  
248-960-7100

2760 Ridgeway Court  
800-444-4351

Walled Lake, MI 48390-1662 USA  
Fax 248 960-7109

Patents USA 4793369, 4960142, 5174317, 5193561, 5485860 Canada 1299468 Made in the USA  
website: [www.herkules.us](http://www.herkules.us) e-mail: [info@herkules.us](mailto:info@herkules.us)

# Table of Contents

Warnings	3-4
Assembly Instructions	5-7
Model Information	8
Installation	8
Operation	9-10
Preventive Maintenance	10
Troubleshooting	11
Drawings with part lists:	12-20

## Warning Symbol



This symbol alerts you to the possibility of serious injury or death if you do not follow the instructions.

## Caution Symbol



This symbol alerts you to the possibility of damage to or destruction of equipment if you do not follow the instructions.

Serial Number \_\_\_\_\_

Model Number \_\_\_\_\_

Purchase Date \_\_\_\_\_

Distributor \_\_\_\_\_



# WARNING



## EQUIPMENT MISUSE HAZARD

Equipment misuse can cause the equipment to rupture, malfunction, or start unexpectedly and result in serious injury.

- This equipment is for professional use only.
- Read all instruction manuals, tags, and labels before operating the equipment.
- Use the equipment only for its intended use.
- Do not alter or modify this equipment.
- Do not exceed the maximum working pressure of the lowest rated system component.
- Do not operate the gun washer at a pressure above the maximum working pressure rating of the gun(s) being cleaned.
- Route the hoses away from traffic areas, sharp edges, moving parts, and hot surfaces.
- Do not use the hoses to pull the equipment.
- Do not move pressurized equipment.
- Use fluids or solvents that are compatible with the equipment wetted parts. Read the fluid and solvent manufacturer's warnings.
- Comply with all applicable local, state and national fire, electrical and other safety regulation.



## PRESSURIZED EQUIPMENT HAZARD

Spray from hose leaks, ruptured components, or from operating the gun washer with an open lid can splash fluid in the eyes or on the skin and cause serious injury.

- A safety device has been installed to shut off the pump when the gun washer lid is opened. Do not tamper with or alter this device.
- Open the gun washer lid slowly.
- Do not prop the gun washer lid open with an object or by any other means.
- Do not stop or deflect fluid leaks with your hand, body, glove, or rag.
- Tighten all fluid connections before operating the equipment.
- Replace worn, damaged, or loose parts immediately.



# WARNING



## FIRE AND EXPLOSION HAZARD



Improper grounding, poor air ventilation, open flames, or sparks can cause a hazardous condition and result in fire or explosion and serious injury.

- Ground the equipment. See Installation for grounding procedure.
- Provide fresh air ventilation to avoid the build up of flammable fumes from the cleaning solution.
- Extinguish all open flames or pilot lights in the gun washer area.
- Disconnect all electrical equipment in the gun washer area.
- Keep the gun washer area free of debris, including cleaning solutions, rags, and gasoline.
- Do not turn on any light switch in the gun washer area while operating or if fumes are present.
- Do not smoke in the gun washer area.
- Do not operate a gasoline engine in the gun washer area.
- Follow the gun manufacturer's solvent and other cleaning recommendations.
- Use solvent with the highest possible flash point.
- If there is any static sparking while using the equipment, **stop operation immediately**. Identify and correct the problem.
- Drain the cleaning solution into a proper storage container when gun washer(s) is not in use.



## TOXIC FLUID HAZARD

Hazardous fluids or toxic fumes can cause serious injury or death if splashed in eyes or on the skin, swallowed, or inhaled.

- Know the specific hazards of the fluid you are using. Read the fluid manufacturer's warnings.
- Store hazardous fluid in an approved container. Dispose of hazardous fluid according to all local, state and national guidelines.
- Wear the appropriate protective clothing, gloves, eyewear and respirator.
- Pipe and dispose of the exhaust air safely. If diaphragm fails, the fluid may be exhausted along with the air.

# Assembly

## Stand and tub connections

### STEP 1

Attach the four legs to the frame using (4) 1/4-20 x 1/2" hex bolts, (4) #10 flat washers, (4) 1/4" lock washers and (4) 1/4" acorn nuts per leg (see fig.1). For the valve assembly, place outside of leg and use (2) 1/4-20 x 5/8" bolts in place of (2) 1/4-20 x 1/2" bolts (see fig.1).

*Note: The leg assembly containing the timer and the leg assembly containing the filter/regulator must be positioned as shown in fig.1. Hoses on valve assembly are not shown for clarity.*

### STEP 2

Position the pump mount bracket between the timer leg assembly and the filter/regulator leg assembly. Attach the pump mount bracket to the stand using (2) 1/4-20 x 3/4" hex bolts, (2) #10 flat washers, (2) 1/4" lock washers and (2) 1/4" acorn nuts per leg (see fig.1).

### STEP 3

Attach the pump to the stand using the (2) 1/4-20 x 1" hex bolts, (2) 1/4" flat washers, (2) 1/4" lock washers and (2) 1/4" hex nuts per leg (see fig.2).

### STEP 4

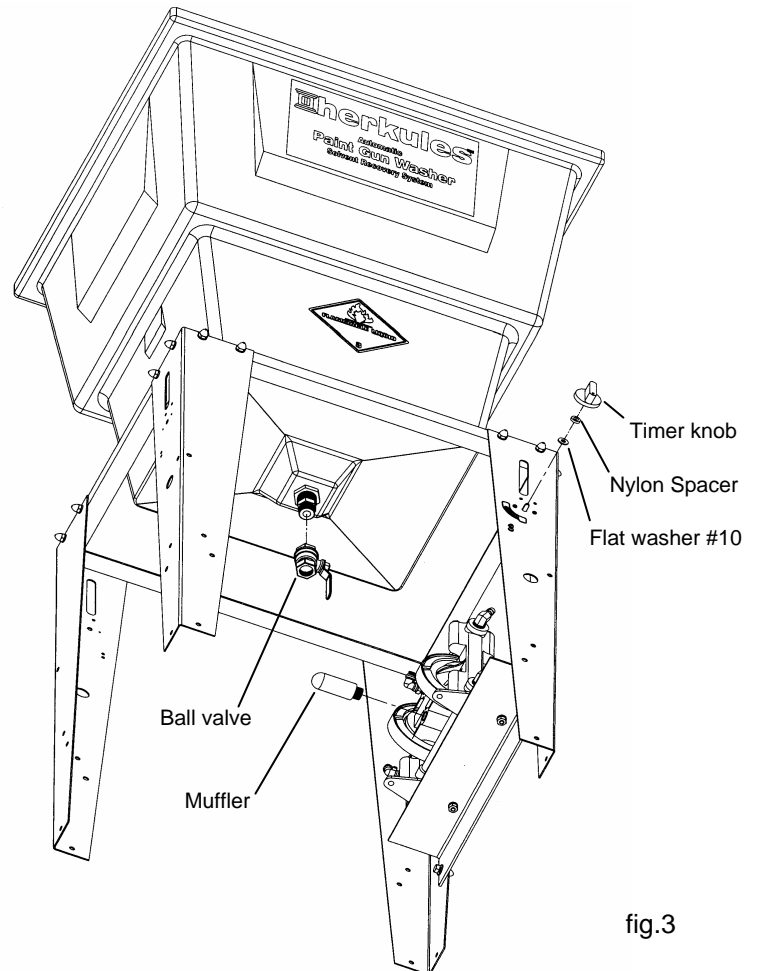
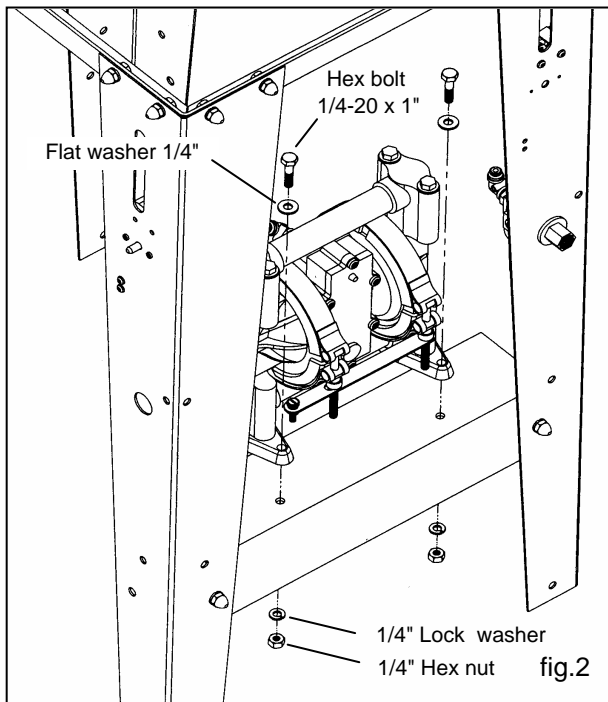
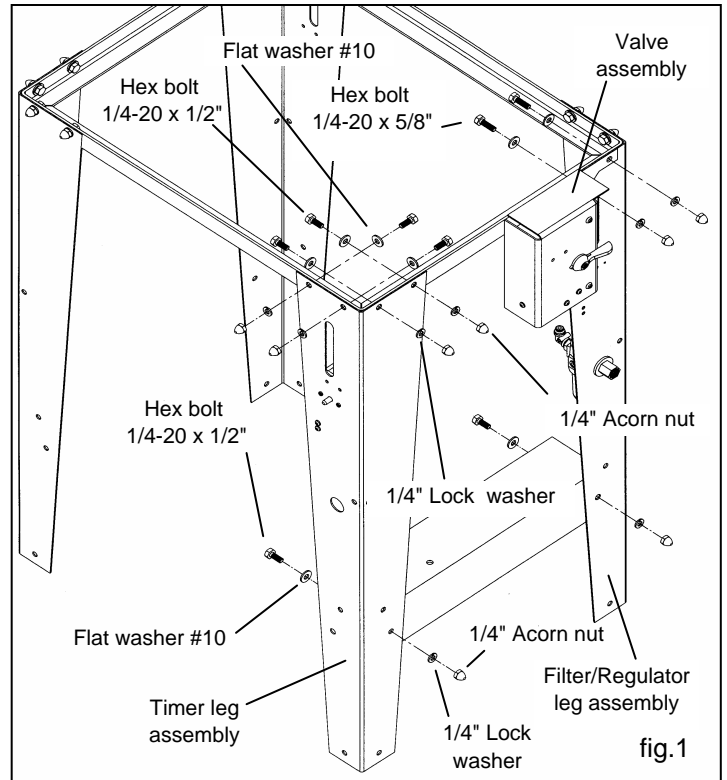
Attach the ball valve to the reducing nipple on the bottom of the tub (see fig.3).

### STEP 5

Attach the white plastic muffler to the exhaust port of the pump (see fig.3).

### STEP 6

Slide (1) #10 flat washer then (1) 1/8" nylon spacer then the timer knob over the shaft protruding from the timer leg assembly (see fig.3).



# Assembly

## Connecting the fluid hoses

### STEP 7

Connect the 3/8" ID valve inlet tube from the rear port of the valve assembly to the upper hose barb on the pump assembly. **DO NOT HEAT HOSE** (see fig.4).

### STEP 8

Connect the 16" long pump inlet tube between the fluid inlet port of the pump and the lower bulkhead on the tub. **DO NOT HEAT HOSE** (see fig.4).

### STEP 9

Connect the manifold inlet tube from the top port of the valve assembly to the upper bulkhead on the tub. Loop the hose behind the timer leg assembly. **DO NOT HEAT HOSE** (see fig.4).

### STEP 10

Connect the smaller, 3/8" OD brush inlet tube, from the front port of the valve assembly to the bulkhead located on the back of the tub (see fig.4)

*Note: When connecting the fluid hoses, be sure to install the hoses completely to the fittings to prevent leaking.*

## Connecting the air hoses

### STEP 11

Connect the (2) 4.5" lengths of black 5/32" air hose from the filter/regulator to the tee coming from the valve assembly and then to the air in port of the limit valve located above the filter/regulator on the rear right leg. Press tubing in through the collar until seated. Pull firmly on hose to test for a tight connection (see fig.5).

*Note: Air in port of limit valve is the port opposite the roller.*

### STEP 12

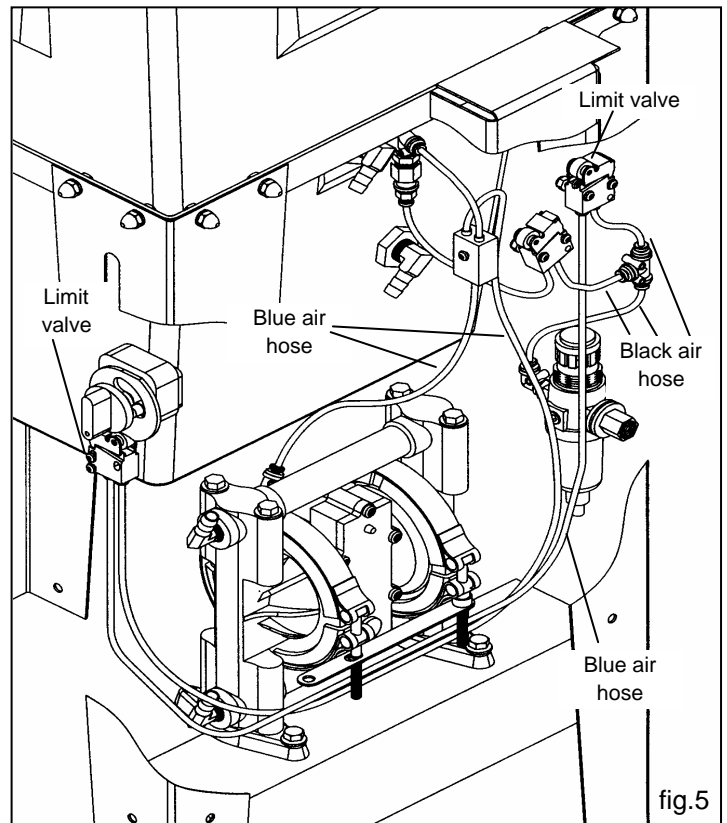
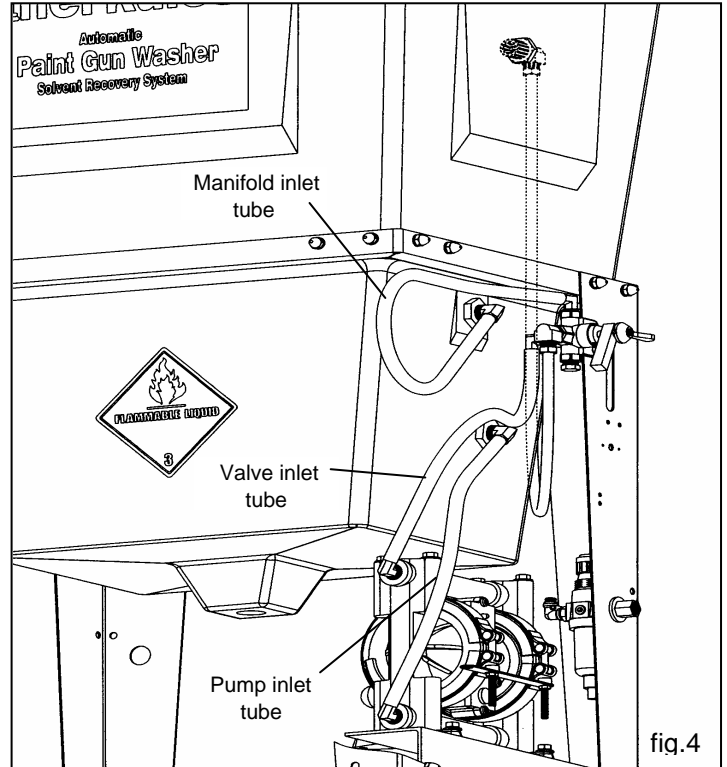
Connect the blue 5/32" air hose between the air in port of limit valve located on the front leg and the air out port of the limit valve located on the rear right leg of the gun washer. Press tubing in through the collar until seated. Pull firmly on hose to test for a tight connection (see fig.5).

### STEP 13

Connect the long blue 5/32" air hose coming from the valve assembly to the air out port of the limit valve located on the front right leg of the gun washer. Press tubing in through the collar until seated. Pull firmly on hose to test for a tight connection (see fig.5).

### STEP 14

Connect the short blue 5/32" air hose coming from the valve assembly to the fitting located on the back of the pump. Press tubing through the collar until seated. Pull firmly on hose to test for a tight connection (see fig.5).



# Assembly

## Connecting lid rod and actuator linkage

### STEP 15

Slide the actuator over the lid rod and hand tighten near the middle of the rod. Insert the actuator into the large slot in the right rear leg (see fig.8).

*Note: Orient the actuator so that the notched side faces the front of the unit and the long arm is on the bottom.*

### STEP 16

Attach the lid rod to the lid bracket using the 1/4" clevis pin and circular cotter pin supplied (see fig.6).

### STEP 17

To install the foot pedal, first attach the end of the lid rod to the foot pedal using the 1/4" clevis pin and circular cotter pin supplied (see fig.7).

### STEP 18

Install the foot pedal to the pump bracket using the 10-24 shoulder bolt and 10-24 nylock nut supplied (see fig.7).

*Note: Do not over tighten nut to the backside of the pump bracket. The foot pedal will not operate if over tightened.*

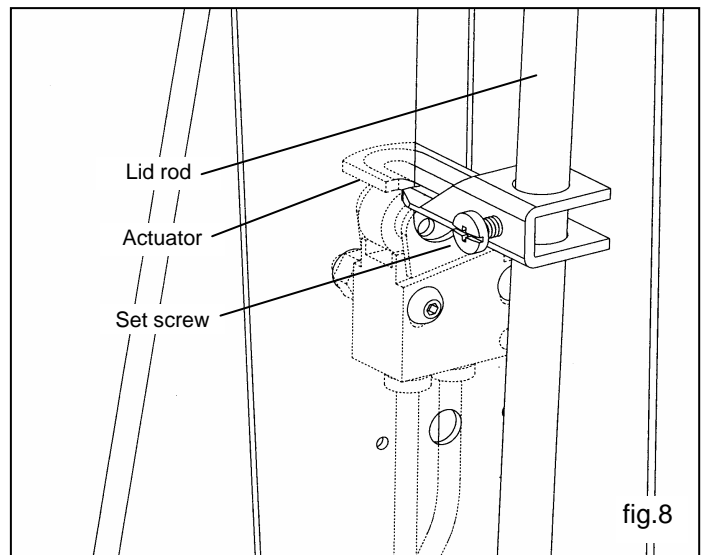
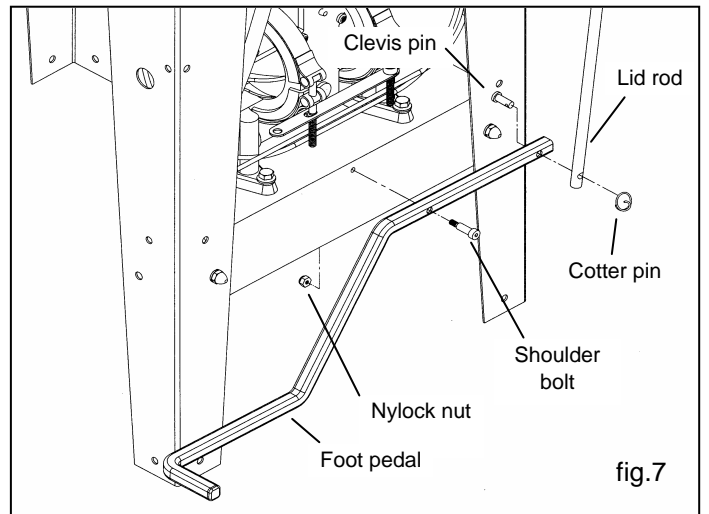
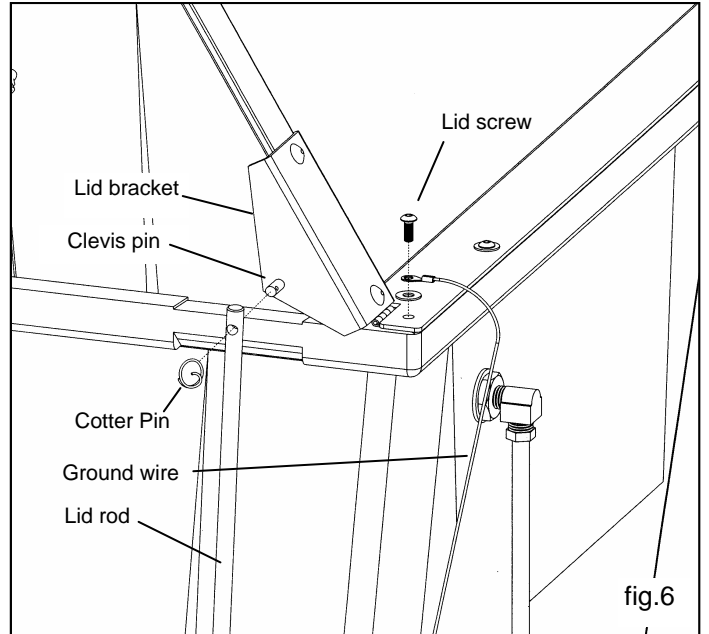
### STEP 19

To adjust the actuator, close the lid and loosen the set screw on the actuator. Slide the actuator down until it completely closes the limit valve and retighten the set screw (see fig.8).

## Grounding the lid

### STEP 15

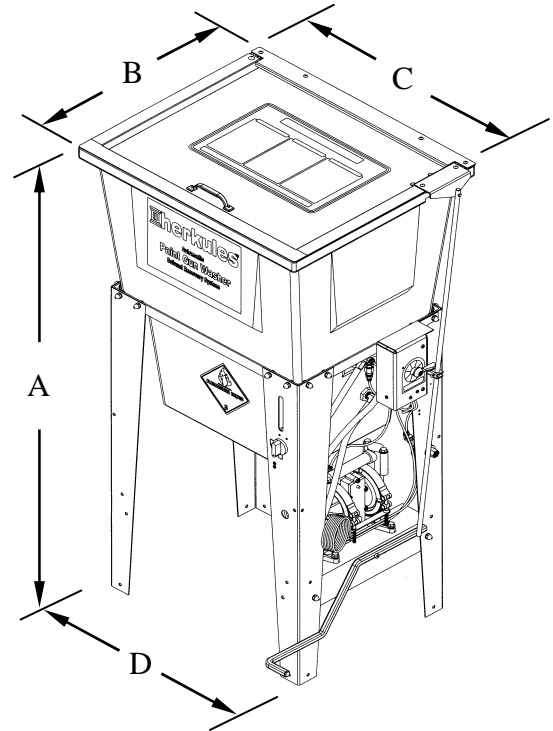
Using an 1/8" allen wrench, remove the back right lid screw. Connect the ground wire (with the aluminum terminal attached) from the pump to the lid screw and reconnect it to the tub (see fig.6).



# Model Information

## Parts bag contents

001-702	Hex bolt 1/4-20 x 1/2	16 ea.
002-161	Flat washer #10	21 ea.
002-163	Shoulder bolt 10-24	1 ea.
005-137	Nylock nut 10-24	1 ea.
008-244	Acorn nut 1/4-20	18 ea.
001-705	Flat washer 1/4	2 ea.
6	Ball valve	1 ea.
83	Hex bolt 1/4-20 x 1	2 ea.
84	Hex nut 1/4-20	2 ea.
85	Lock Washer 1/4	20 ea.
1000652	Clevis pin 1/4 dia.	2 ea.
1000252	Cotter pin	2 ea.
1000116	Hex bolt 1/4-20 x 5/8	2 ea.
11957	Actuator	1 ea.
C9A	Nipple 1/8 NPT X 4-1/2	2 ea.
53B	Stem support female	2 ea.
M230-002	Timer Knob	1 ea.
M230-005	Spacer 1/8" Nylon	1 ea.
M5	Tube 5/32 blue plastic	30 in.
M5-BLACK	Tube 5/32 black plastic	4.5 in.
M5-BLACK	Tube 5/32 black plastic	4.5 in.



**NOTE:** Dimensions listed are overall measurements.

Model	Description	Weight lbs/(kg)	Dimensions in./(mm)			
			A	B	C	D
G202	Two gun, two cup paint gun washer equipped with diaphragm pump, filter-regulator, timer, manual brush clean and foot pedal for solvent and water based paints.	68 (31)	46.25 (1175)	22.6 (574)	25 (635)	21.25 (635)

## Installation

### Installing the Gun Washer

- 1) Place gun washer on a level surface in a properly ventilated paint mixing room or paint booth.

### Grounding the Gun Washer

- 1) Connect the ground wire on the gun washer's pump to a true earth ground.
- 2) Ground all equipment used or located in the gun washer area.

### Connecting the Air Line

- 1) Install a 1/4 in. npt male coupler, that is compatible with the quick disconnect of your air supply line, into the air supply port of the filter/regulator located on the right rear leg (see fig.9).
- 2) Connect air line with at least 75 psi to the coupler. Filter/regulator is preset. Do not adjust.

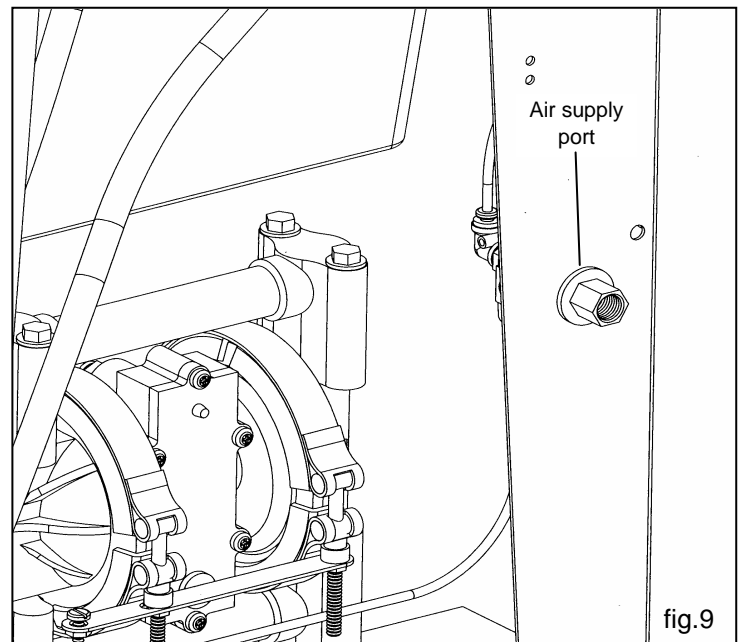


fig.9

# Operation

## Filling the Gun Washer with Fluid

- 1) Close ball valve located on the bottom of the tank.
- 2) Pour five gallons (18.9 liters) of high quality cleaning solution into the tub. Unit is capable of cleaning both solvent and water based paints.

## Preparing the Equipment to be washed

- 1) Remove paint cup or paint line and the air line from the paint gun.
- 2) Drain excess paint from cup and gun.
- 3) Remove all gauges and regulators.
- 4) Lock the gun trigger in the open position by placing the trigger lock around the gun handle and trigger (see fig.10).

## Placing Equipment in the Gun Washer

To clean guns not mentioned here, use the long or short stem supports as needed (see fig.10). For questions or adapter kits contact your paint gun washer distributor.

### Siphon Feed Guns

Place the gun siphon tube on the short stem support.

### Gravity Feed Guns (HVLV)

Place long stem support over one of the short stem supports. Place paint inlet of gun on long stem support. Place the air cap assembly over the air inlet of the gun to keep cleaning solution out.

### Pressure Feed Guns

Place long stem support over one of the shorter stem supports. Place paint inlet of gun on long stem support.

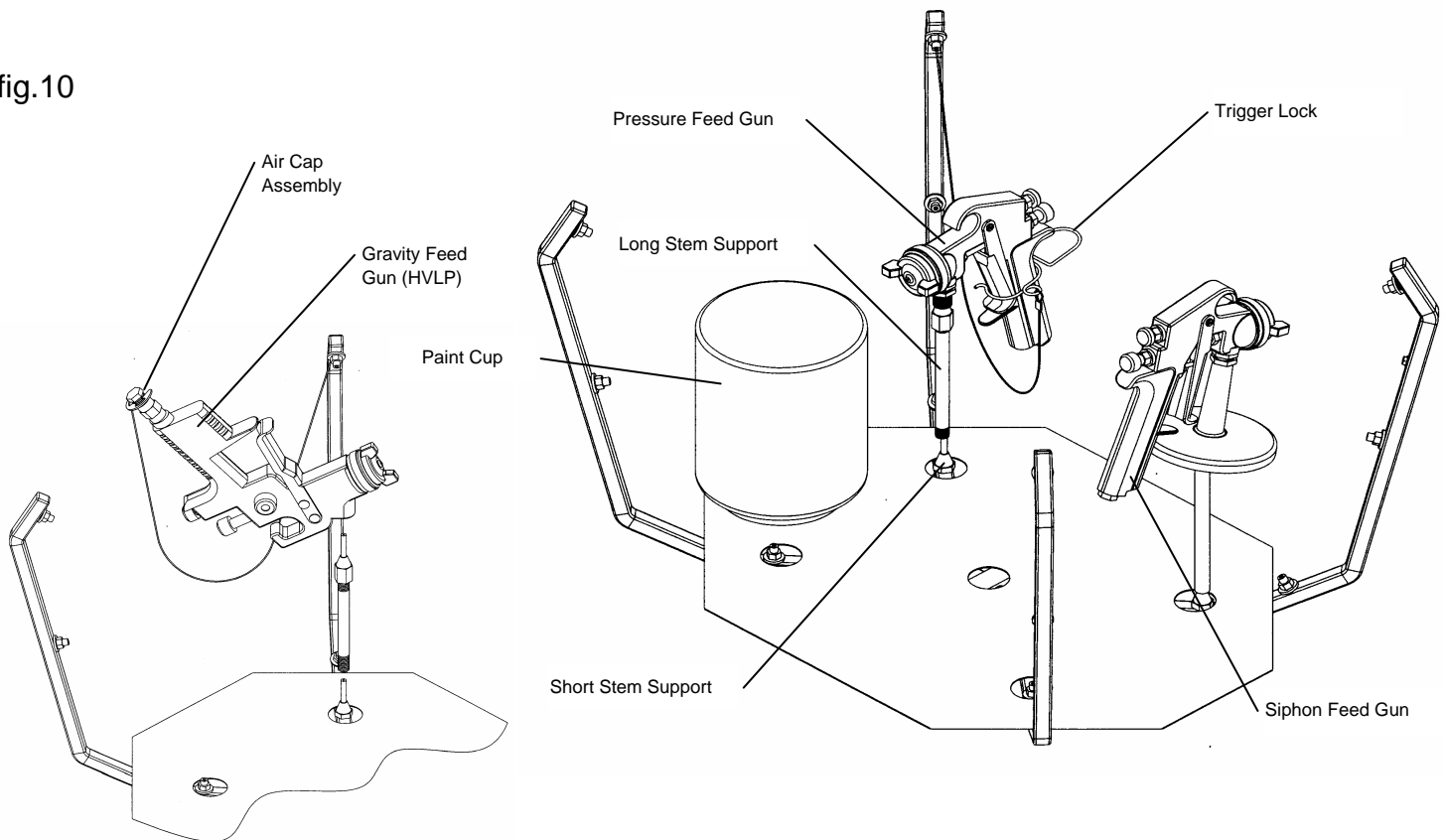
### Pots and Cups

Place pots and/or cups on divider platform over front spray nozzles.

## CAUTION

All pressure gauges must be removed before placing the equipment in the gun washer to avoid damaging the gauges.

fig.10



# Operation

## Operating the Gun Washer

- 1) Make sure all wire trigger locks and other accessories are inside the gun washer tub.
- 2) If washing only one set of equipment, place empty cans over the unused nozzles and/or stem supports to prevent spray from hitting the underside of the gun washer lid.
- 3) Close the gun washer lid.
- 4) Turn the timer knob clockwise 90 degrees to start the gun washer. The gun washer will run for 90 seconds. Turning the timer knob less than 90 degrees will reduce the timing cycle. Paint equipment will clean in 60 to 90 seconds.
- 5) If the lid is opened prior to the end of the timing cycle, the safety air cutoff switch will stop the gun washer. The gun washer will start again when the lid is closed if time remains on the timer.

Note: Open the lid slowly to minimize vapor escape.

- 6) Remove the equipment from the gun washer and wipe off any remaining cleaning solution.

## Operating the Manual Brush

- 1) Make sure timer is turned off.
- 2) Place equipment to be cleaned inside the gun washer.
- 3) Hold brush so that the bristles point downward inside the gun washer.
- 4) Turn the lever on the valve assembly to the 'Brush Clean' position.

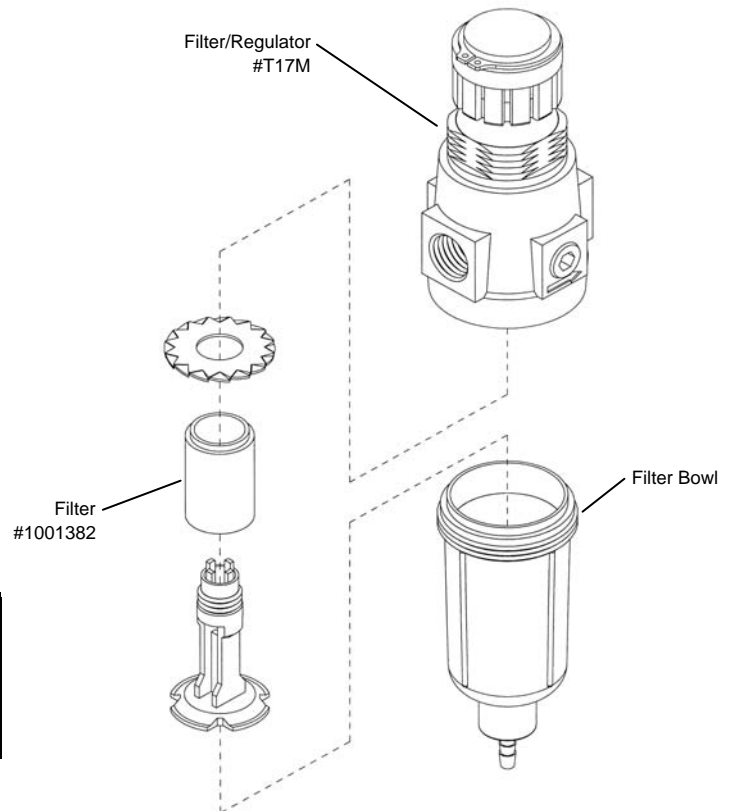
Note: DO NOT turn on timer. Brush operates without the timer controls.

- 5) Clean parts as necessary.
- 6) Turn the lever on the valve assembly to the 'Auto Clean' position.

Note: The brush will continue supplying fluid until the lever is returned to the 'Auto Clean' position.

# Preventive Maintenance

- 1) Drain excess paint from cup or pot before placing in gun washer.
- 2) Drain paint sludge from gun washer tank weekly. Do this after a weekend so that it has settled. Open ball valve and drain until clear solution flows. Add cleaning solution to fill 1" above intake filter.
- 3) Remove the filter bowl and check the filter inside the regulator for excess buildup approx. every 6 months.
- 4) Change cleaning solution completely when objects being cleaned become tacky to the touch.
- 5) Clean inside of tub and intake filter before filling with cleaning solution.



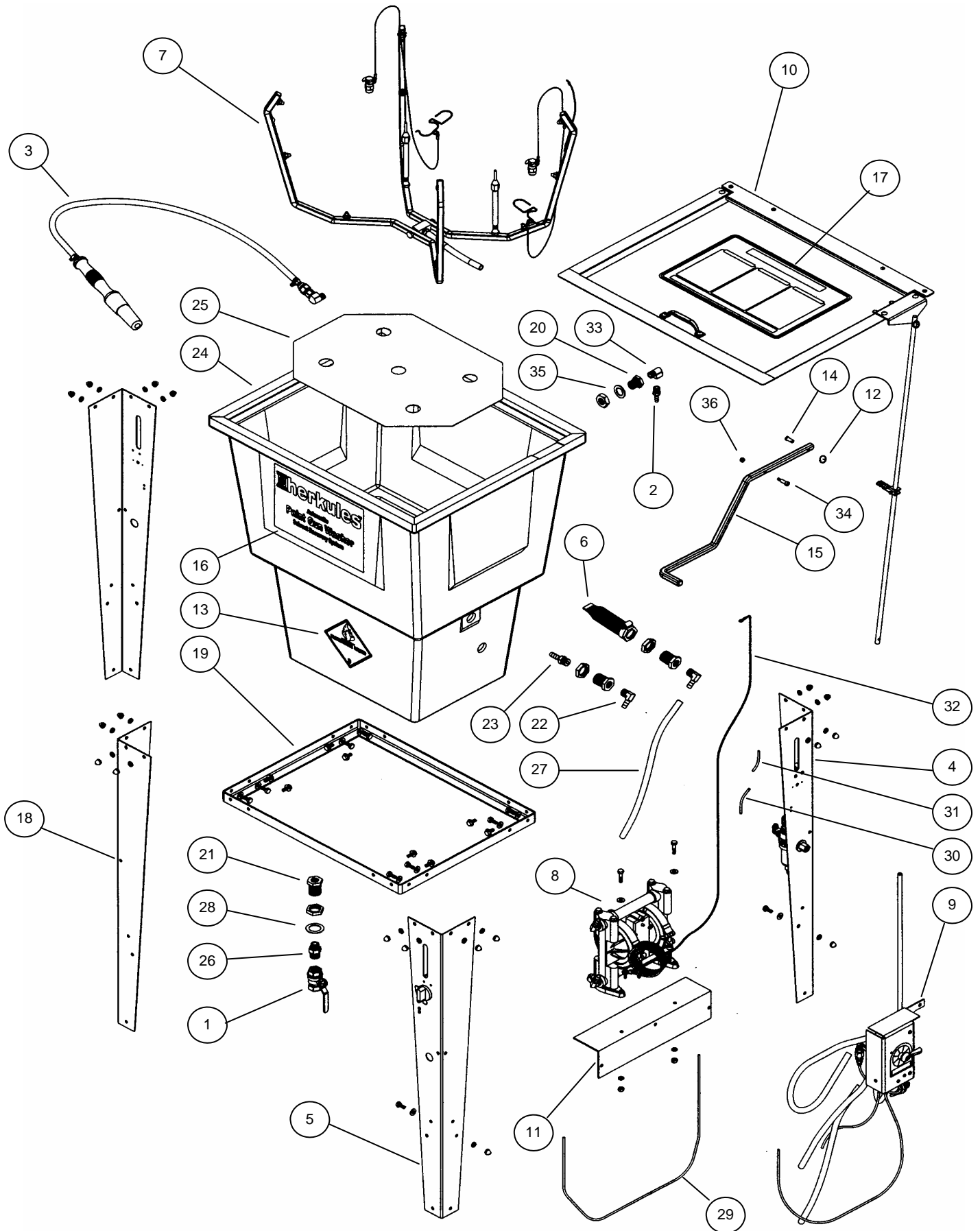
## **CAUTION**

Do not change the setting of the filter/regulator. This could damage the filter/regulator or pump

# Troubleshooting

Problem	Possible Solution
Gun washer will not turn on.	<ol style="list-style-type: none"> <li>1 Make sure the air line is properly connected with at least 75 psi. Air pressure is regulated at 75 psi.</li> <li>2 Make sure lid is fully closed. Make sure the lid rod actuator is making full contact with the limit valve on the right rear leg.</li> <li>3 Check all air connections to ensure that there are no leaks.</li> <li>4 Make sure timer cam is engaging the limit valve on the right front leg.</li> <li>5 Make sure timer is on and functioning correctly.</li> <li>6 Make sure brush valve is turned the the 'Auto Clean' position for automatic cleaning or 'Brush Clean' for manual brush cleaning.</li> </ol>
Gun washer turns on but pumps slowly or not at all.	<ol style="list-style-type: none"> <li>1 Make sure intake filter is not clogged (Clean or replace).</li> <li>2 Make sure the air line is properly connected with at least 75 psi. Air pressure is regulated at 75 psi.</li> <li>3 Check all air connections to ensure that there are no leaks.</li> <li>4 Make sure there is 5 gallons of clean solution in the gun washer. The cleaning solution should be an inch above the intake filter.</li> <li>5 Make sure lid is fully closed. Make sure the lid rod actuator is making full contact with the limit valve on the right rear leg.</li> <li>6 Make sure manifold nozzles and stem supports are not clogged.</li> <li>7 Make sure brush valve is facing exactly in the desired direction.</li> </ol>
Gun washer will not shut off	<ol style="list-style-type: none"> <li>1 Make sure timer cam is moving. If its not, slightly loosen the nuts holding the limit valve on the right front leg of the stand. Reposition valve and tighten nuts.</li> <li>2 Make sure limit valves located on the right front leg or right rear leg of the stand are not stuck in closed position.</li> <li>3 Make sure brush valve is not turned to the 'Brush Clean' position.</li> <li>4 Make sure limit valve inside brush valve is not stuck in closed position.</li> </ol>

# G202 Parts Layout

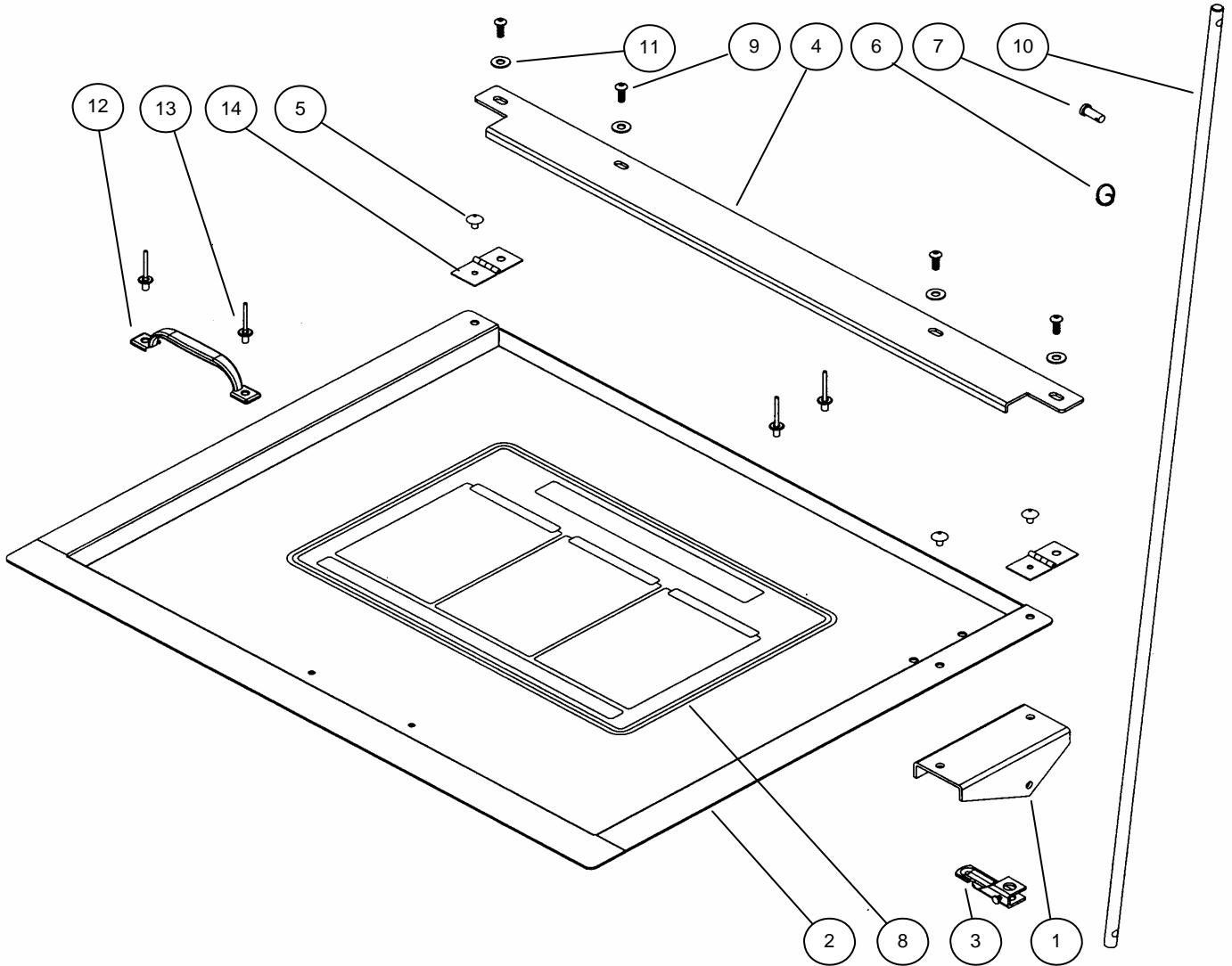


# G202 Parts Layout

	<b>Part #</b>	<b>Description</b>	<b>Quantity</b>	
1	6	Ball Valve	1 EA.	
2	990	Hose Barb 1/4 x 1/4 NPT - Brass	1 EA.	
3	10737	Manual Brush Assembly	1 EA.	
4	11959	Filter Leg Assy	1 EA.	See pg. 16
5	11960	Timer Leg Assembly	1 EA.	See pg. 16
6	12491	Filter for Pump Inlet	1 EA.	
7	12514	Manifold Assembly	1 EA.	See pg. 15
8	12517	Pump Assembly	1 EA.	See pg. 16
9	12663	Valve Assembly for Manual Brush	1 EA.	See pg. 18
10	12792	Lid Assembly	1 EA.	See pg. 14
11	12795	Pump Mounting Bracket	1 EA.	
12	1000252	Cotter Pin	1 EA.	
13	1000651	Flammable Caution Sticker	1 EA.	
14	1000652	Clevis Pin	1 EA.	
15	1001099	Foot Pedal	1 EA.	
16	1001706	Front Decal	1 EA.	
17	1001708	Lid Sticker	1 EA.	
18	1002378	Leg	2 EA.	
19	1002428	Stand Frame	1 EA.	
20	1002643	Bulkhead with Nut 3/4" - Brass	1 EA.	
21	1002644	Bulkhead with Nut 1" - Brass	3 EA.	
22	1002650	Hose Barb 3/8 x 3/8 NPT 90° - Brass	2 EA.	
23	1002654	Hose Barb 3/8 x 3/8 NPT - Brass	1 EA.	
24	1-BLUE	Tub	1 EA.	
25	25D	Divider	1 EA.	
26	62	Reducing Nipple - Brass	1 EA.	
27	64PE	Hose Inlet	16 IN.	
28	85B	Washer 1-1/2 x 1 - Nylon	1 EA.	
29	M5	Tube 5/32 Plastic - Blue	30 IN.	
30	M5-BLACK	Tube 5/32 Plastic - Black	4.5 IN.	
31	M5-BLACK	Tube 5/32 Plastic - Black	4.5 IN.	
32	002-120A-72	Ground Wire	2 EA.	
33	002-131	Elbow 1/4 NPT - Brass	2 EA.	
34	002-163	Shoulder Screw 10-24	1 EA.	
35	005-103	Washer 3/4" - Nylon	1 EA.	
36	005-137	Nylock Nut 10-24	1 EA.	

**Note:** For parts shown but not identified refer to assembly layouts on pages 14-20

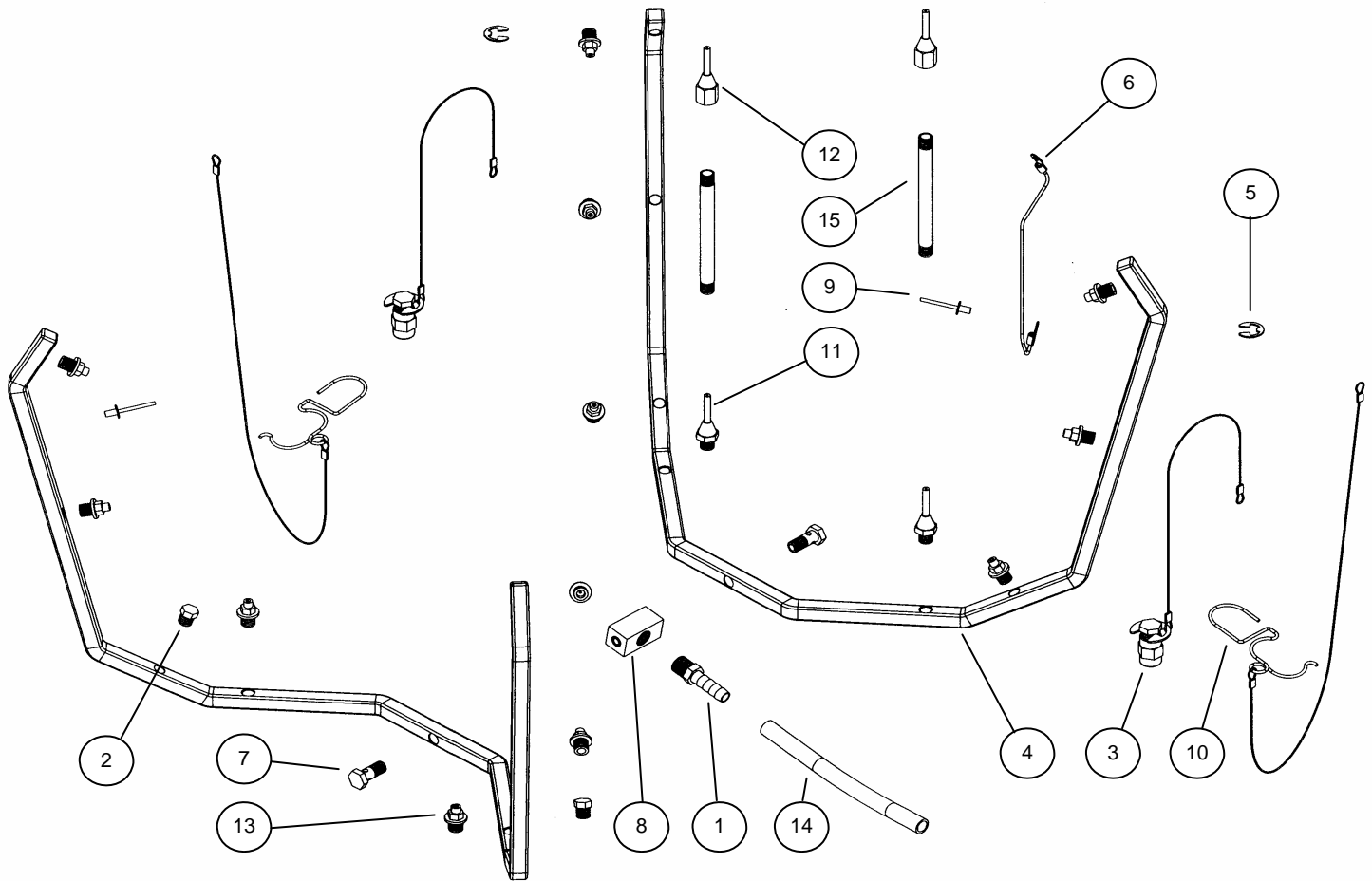
# G202 Lid Layout



Part #	Description	Quantity
1	11213 Actuator Lid Bracket	1 EA.
2	11219 Lid	1 EA.
3	11957 Actuator Bracket Notched	1 EA.
4	12321 Lid Stop	1 EA.
5	1000119 Rivet 3/16 x 5/16 - Stainless	3 EA.
6	1000252 Cotter Pin	1 EA.
7	1000652 Clevis Pin	1 EA.
8	1001708 Lid Sticker	1 EA.
9	1002546 Screw 10-24 x 1/2	4 EA.
10	1002760 Actuator Rod	1 EA.
11	002-161 Washer Flat #10 USS - Zinc	4 EA.
12	10A Handle	1 EA.
13	14C Rivet 3/16 x 1/2 - Aluminum	4 EA.
14	39C Hinge	2 EA.

**Note:** Parts are shown for reference purposes only and are not necessarily part of a Herkules assembly.

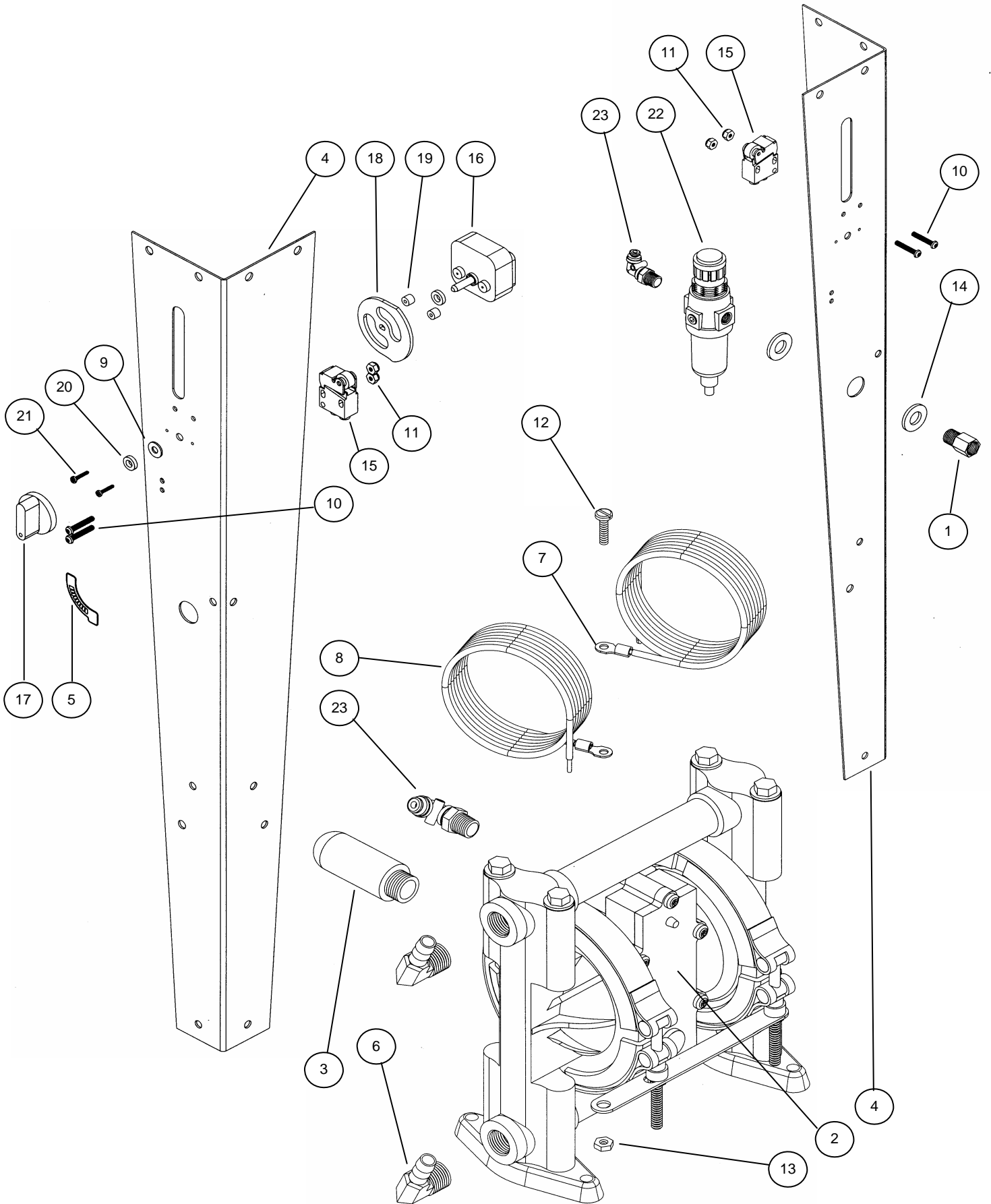
# G202 Manifold Layout



Part #	Description	Quantity	
1	57	Hose Barb 3/8 x 1/4 NPT - Brass	1 EA.
2	59	Hex Plug 1/8 NPT - Brass	2 EA.
3	12509	Air Cap Assembly - Brass and Stainless	2 EA.
4	1002321	Manifold Half - Stainless	2 EA.
5	1002651	E-ring - Stainless	2 EA.
6	002-121A-6	Manifold Ground Wire	1 EA.
7	002-136S	Manifold Bolt - Stainless	2 EA.
8	002-137	Manifold Block	1 EA.
9	002-192	Ground Wire Rivet	2 EA.
10	22BA	Trigger Lock Assembly	2 EA.
11	53A	Stem Support Male	2 EA.
12	53B	Stem Support Female	2 EA.
13	54P1	Full jet Nozzle - White	12 EA.
14	64PE	Manifold Hose	7 IN.
15	C9A	Nipple 4-1/2" - Brass	2 EA.

**Note:** Parts are shown for reference purposes only and are not necessarily part of a Herkules assembly.

# G202 Pump and Legs Layout

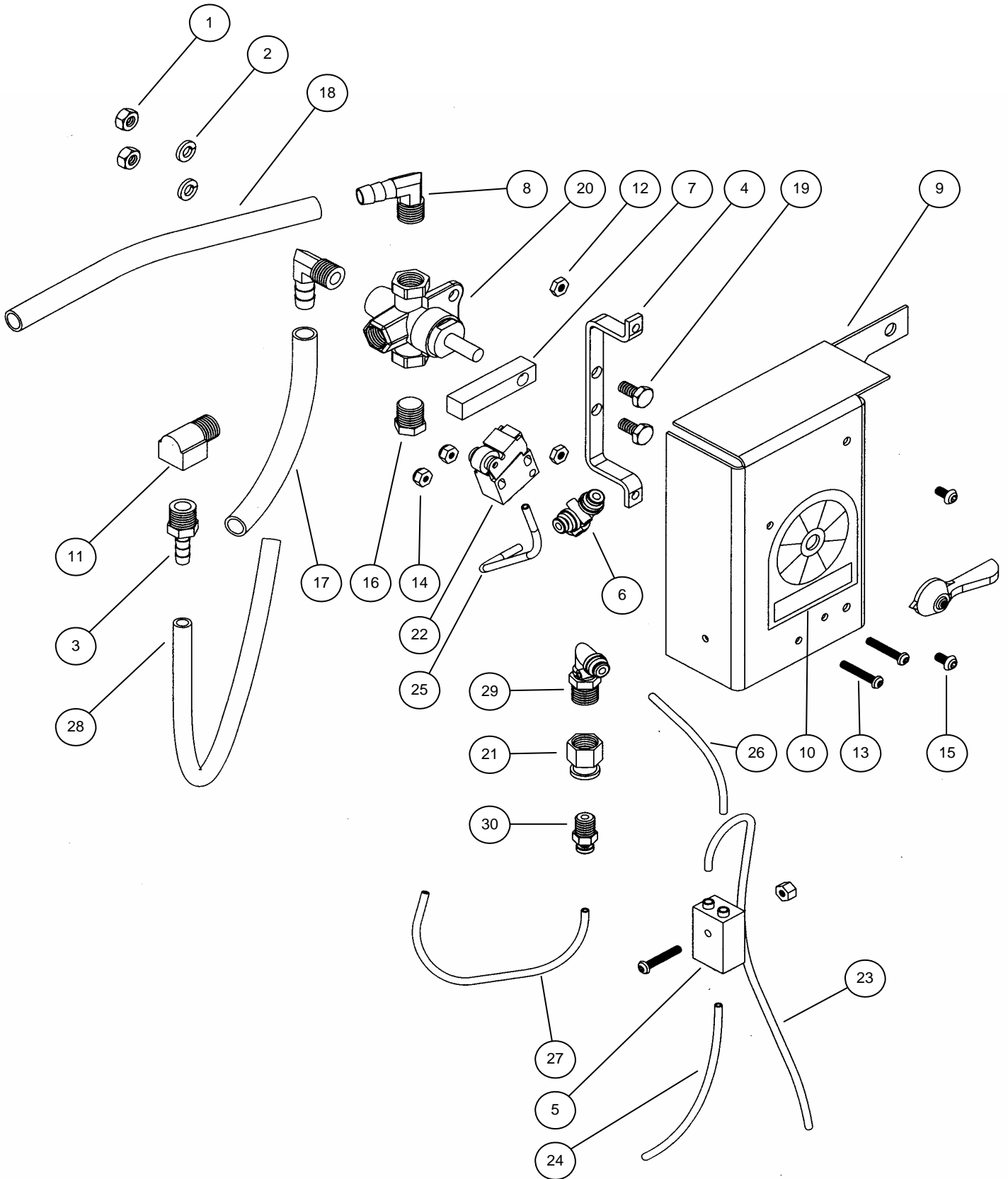


# G202 Pump and Legs Layout

	Part #	Description	Quantity
1	67	Adaptor 1/4 NPT - Brass	1 EA.
2	338	Pump	1 EA.
3	1000204	Plastic Muffler	1 EA.
4	1002378	Leg	2 EA.
5	1002414	ON/OFF Sticker	1 EA.
6	1002650	Hose Barb 3/8 x 3/8 NPT 90° - Brass	2 EA.
7	002-106	Wire Terminal	3 EA.
8	002-120A-72	Ground Wire	2 EA.
9	002-161	Washer Flat #10 USS - Zinc	1 EA.
10	002-171	Screw 8-32 x 1 - Black	4 EA.
11	002-172	Nut Nylock 8-32 - Zinc	4 EA.
12	005-131	Screw 10-24 x 1/2 - Stainless	1 EA.
13	005-132	Nut Hex 10-24 - Stainless	1 EA.
14	85D	Washer Flat 1/2 - Zinc	2 EA.
15	M1C	Limit Valve - Gold	2 EA.
16	M230-001A	Timer	1 EA.
17	M230-002	Knob for Timer	1 EA.
18	M230-003	Cam For Timer	1 EA.
19	M230-004	Spacer 1/4" Thick - Nylon	2 EA.
20	M230-005	Spacer 1/8" Thick - Nylon	2 EA.
21	M230-006	Timer Screw #4 x 5/8	2 EA.
22	T17M	Filter / Regulator	1 EA.
23	T25	5/32 Hose Fitting 90° Swivel	2 EA.

**Note:** Parts are shown for reference purposes only and are not necessarily part of a Herkules assembly.

# G202 Valve Layout

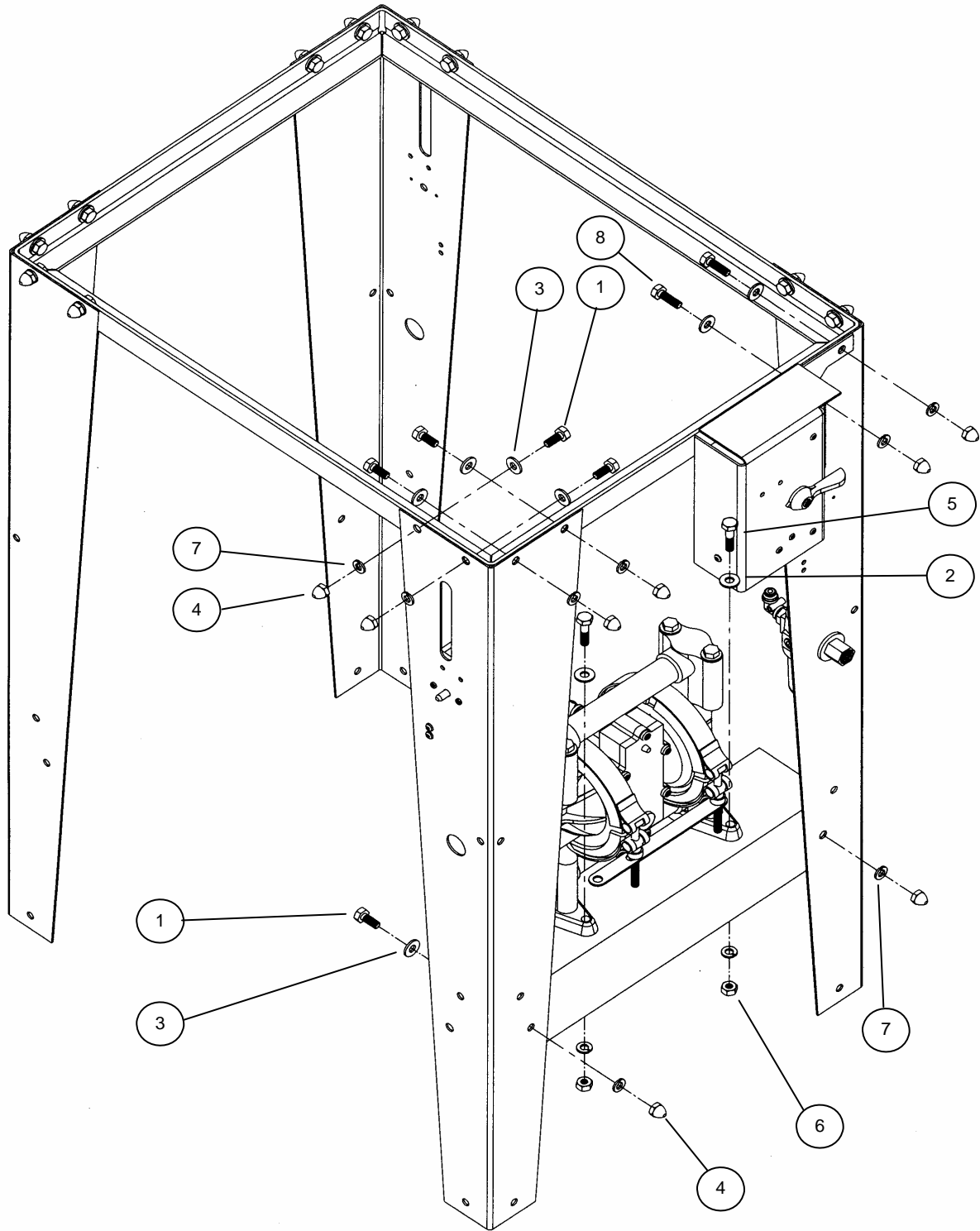


# G202 Valve Layout

	Part #	Description	Quantity
1	84	Hex Nut 1/4-20	2 EA.
2	85	Lock Washer 1/4	2 EA.
3	990	Hose Barb 1/4 x 1/4 NPT - Brass	1 EA.
4	11217	Mounting Bracket	1 EA.
5	1000851	OR Valve	1 EA.
6	1000852	5/32 Tee	1 EA.
7	1000907	Valve Actuator	1 EA.
8	1000967	Hose Barb 90° 3/8 x 1/4 NPT	2 EA.
9	1002692	Valve Bracket	1 EA.
10	1002761	Manual Brush Sticker	1 EA.
11	002-131	Elbow 1/4 NPT	1 EA.
12	002-160	Hex Nut 10-32	2 EA.
13	002-171	Screw 8-32 x 1	3 EA.
14	002-172	Nylock Nut 8-32	3 EA.
15	002-173	Screw 10-32 x 5/8	2 EA.
--	004-723	Set Screw	1 EA.
16	59B	Hex Plug 1/4 NPT	1 EA.
17	64PE	3/8 ID Hose	16 IN.
18	64PE	3/8 ID Hose	32 IN.
19	83K	Hex Bolt 1/4-20 x 3/4	2 EA.
--	90PL	Orifice	1 EA.
20	C26	Brush Valve	1 EA.
21	C7	Reducing Couple	1 EA.
22	M1C	Limit Valve	1 EA.
23	M5	Tube 5/32 Plastic - Blue	25 IN.
24	M5	Tube 5/32 Plastic - Blue	12 IN.
25	M5-BLACK	Tube 5/32 Plastic - Black	8 IN.
26	M5-NEUTRAL	Tube 5/32 Plastic - Clear	5 IN.
27	M5-NEUTRAL	Tube 5/32 Plastic - Clear	5 IN.
28	M7APE	3/8 OD Brush Tube	25 IN.
29	T25	5/32 Hose Fitting 90° Swivel	1 EA.
30	T4	5/32 Hose Fitting	1 EA.

**Note:** Parts are shown for reference purposes only and are not necessarily part of a Herkules assembly. 004-723 and 90PL are not shown for clarity.

# G202 Hardware Layout



	<b>Part #</b>	<b>Description</b>	<b>Quantity</b>
1	001-702	Bolt Hex 1/4-20 x 1/2 - Zinc	16 EA.
2	001-705	Washer Flat 1/4 USS - Zinc	2 EA.
3	002-161	Washer Flat #10 USS - Zinc	19 EA.
4	008-244	Acorn Nut 1/4-20 - Nickel	18 EA.
5	83	Bolt Hex 1/4-20 x 1 - Zinc	2 EA.
6	84	Nut Hex 1/4-20 - Zinc	2 EA.
7	85	Washer Lock 1/4 - Zinc	20 EA.
8	1000116	Bolt Hex 1/4-20 x 5/8 - Zinc	2 EA.