

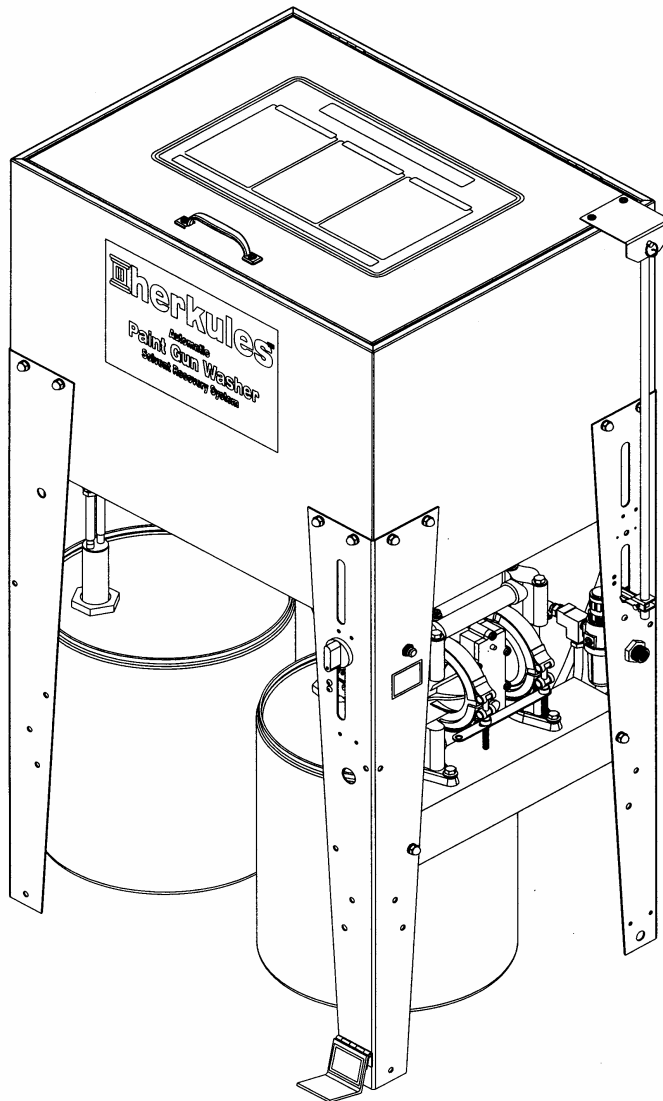
## *G405*

### *OWNERS MANUAL*



This manual contains important information concerning the installation and operation of the gun washers listed above. Read manual thoroughly and keep for future reference

#### INSTRUCTIONS



Herkules Equipment Corporation  
248-960-7100

2760 Ridgeway Court  
800-444-4351

Walled Lake, MI 48390-1662 USA  
Fax 248 960-7109

Patents USA 7070167 4793369, 4960142, 5174317, 5193561, 5485860 Canada 1299468 & Patents Pending  
website: [www.herkules.us](http://www.herkules.us)

Made in the USA

e-mail: [info@herkules.us](mailto:info@herkules.us)

# Table of Contents

Warnings	3-4
Assembly Instructions	5-10
Model Information	11
Installation	12
Operation	13-14
Preventive Maintenance	14
Troubleshooting	15
Drawings with part lists:	16-21
Notes	22

## Warning Symbol



This symbol alerts you to the possibility of serious injury or death if you do not follow the instructions.

## Caution Symbol




This symbol alerts you to the possibility of damage to or destruction of equipment if you do not follow the instructions.

Serial Number \_\_\_\_\_

Model Number \_\_\_\_\_

Purchase Date \_\_\_\_\_

Distributor \_\_\_\_\_

 **herkules™ PATENT NUMBERS**

This product has patent protection under one or more of the following patent numbers:

7070167, 5485860, 5193561, 5174317  
4960142, 4793369, 1299468  
and Patents Pending

website: [www.herkules.us](http://www.herkules.us) 1002742



# WARNING



## EQUIPMENT MISUSE HAZARD

Equipment misuse can cause the equipment to rupture, malfunction, or start unexpectedly and result in serious injury.

- This equipment is for professional use only.
- Read all instruction manuals, tags, and labels before operating the equipment.
- Use the equipment only for its intended use.
- Do not alter or modify this equipment.
- Do not exceed the maximum working pressure of the lowest rated system component.
- Do not operate the gun washer at a pressure above the maximum working pressure rating of the gun(s) being cleaned.
- Route the hoses away from traffic areas, sharp edges, moving parts, and hot surfaces.
- Do not use the hoses to pull the equipment.
- Do not move pressurized equipment.
- Use fluids or solvents that are compatible with the equipment wetted parts. Read the fluid and solvent manufacturer's warnings.
- Comply with all applicable local, state and national fire, electrical and other safety regulation.



## PRESSURIZED EQUIPMENT HAZARD

Spray from hose leaks, ruptured components, or from operating the gun washer with an open lid can splash fluid in the eyes or on the skin and cause serious injury.

- A safety device has been installed to shut off the pump when the gun washer lid is opened. Do not tamper with or alter this device.
- Open the gun washer lid slowly.
- Do not prop the gun washer lid open with an object or by any other means.
- Do not stop or deflect fluid leaks with your hand, body, glove, or rag.
- Tighten all fluid connections before operating the equipment.
- Replace worn, damaged, or loose parts immediately.



# WARNING



## FIRE AND EXPLOSION HAZARD



Improper grounding, poor air ventilation, open flames, or sparks can cause a hazardous condition and result in fire or explosion and serious injury.

- Ground the equipment. See Installation for grounding procedure.
- Provide fresh air ventilation to avoid the build up of flammable fumes from the cleaning solution.
- Extinguish all open flames or pilot lights in the gun washer area.
- Disconnect all electrical equipment in the gun washer area.
- Keep the gun washer area free of debris, including cleaning solutions, rags, and gasoline.
- Do not turn on any light switch in the gun washer area while operating or if fumes are present.
- Do not smoke in the gun washer area.
- Do not operate a gasoline engine in the gun washer area.
- Follow the gun manufacturer's solvent and other cleaning recommendations.
- Use solvent with the highest possible flash point.
- If there is any static sparking while using the equipment, **stop operation immediately**. Identify and correct the problem.
- Drain the cleaning solution into a proper storage container when gun washer(s) is not in use.



## TOXIC FLUID HAZARD

Hazardous fluids or toxic fumes can cause serious injury or death if splashed in eyes or on the skin, swallowed, or inhaled.

- Know the specific hazards of the fluid you are using. Read the fluid manufacturer's warnings.
- Store hazardous fluid in an approved container. Dispose of hazardous fluid according to all local, state and national guidelines.
- Wear the appropriate protective clothing, gloves, eyewear and respirator.
- Pipe and dispose of the exhaust air safely. If diaphragm fails, the fluid may be exhausted along with the air.

# Assembly

## Stand and Pump Installation

### STEP 1

Install the legs to the tank using (4) x Hex Bolt 1/4-20 x 1/2" SS (1002751), (4) x Acorn Nut (008-244) and (4) x Lock Washer (85) per leg (see fig.1).

*Note: Filter/Regulator and Timer Leg Assemblies must be positioned as shown in fig.1.*

### STEP 2

Install the Timer Knob (M230-002) with Nylon Spacer (M230-005) and Flat Washer #10 Zinc (002-161) to the Timer Leg (See fig.1).

### STEP 3

Install the Pump Bracket (1002747) to the legs using (2) x Hex Bolt 1/4-20 x 1" (83), (2) x Flat Washer (001-705), (2) x Lock Washer (85) and (2) x Hex Nut (84) (see fig.2).

### STEP 4

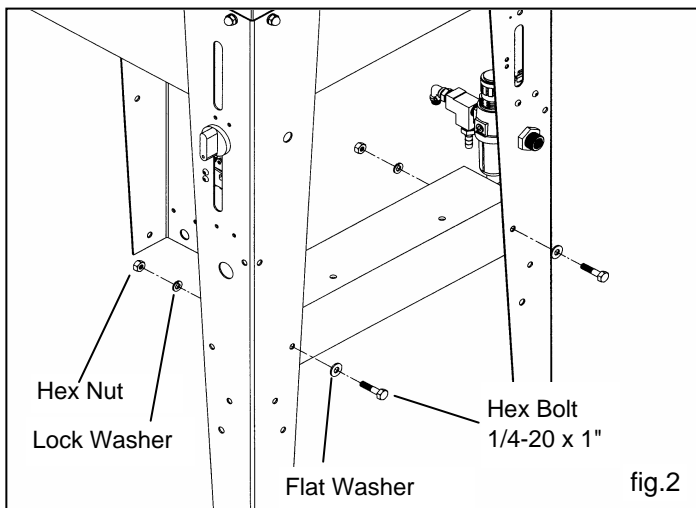
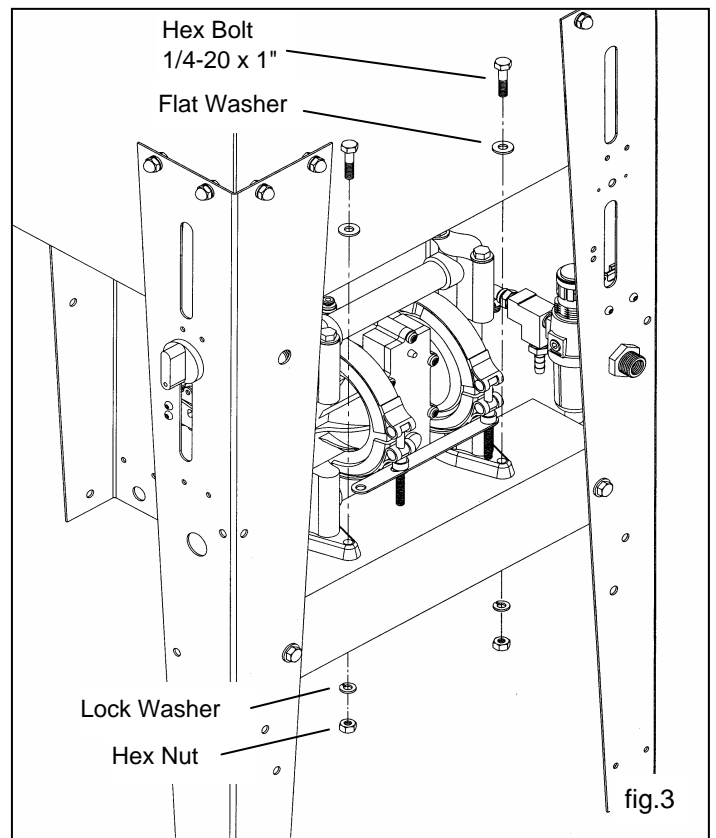
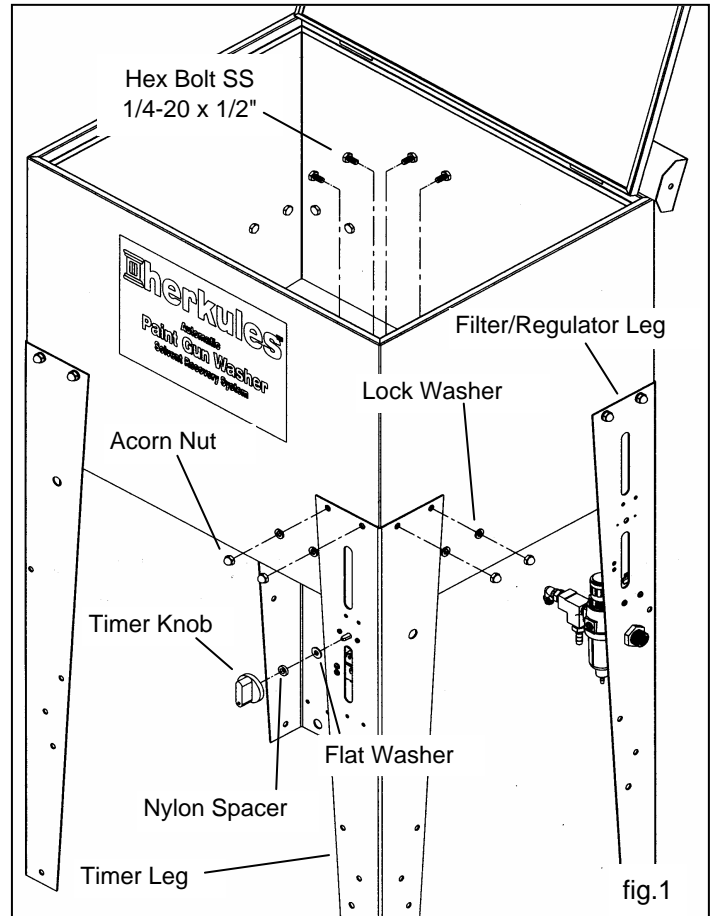
Install the Pump Assembly (12771) to the stand using (2) x Hex Bolt 1/4-20 x 1" (83), (2) x Flat Washer (001-705), (2) x Lock Washer (85) and (2) x Hex Nut (84) (see fig.3).

## Fluid and Air Hose Connections

### STEP 5

Make all necessary hose connections (see fig 4-6 and fig.7a).

*NOTE: Using the included Tube Clamp (1002149) secure the 3/8" OD hose going to the rinse pump to the rear left leg mounting hardware (see fig.7b on pg.9). Tie wrap 5/32" OD hoses to the 3/8" OD hose if desired.*



# Assembly

Fig.4 shows the unit without the rear left leg and excludes all hoses other than those called out.

DO NOT heat hoses to install.  
Test connection by pulling firmly on hose.

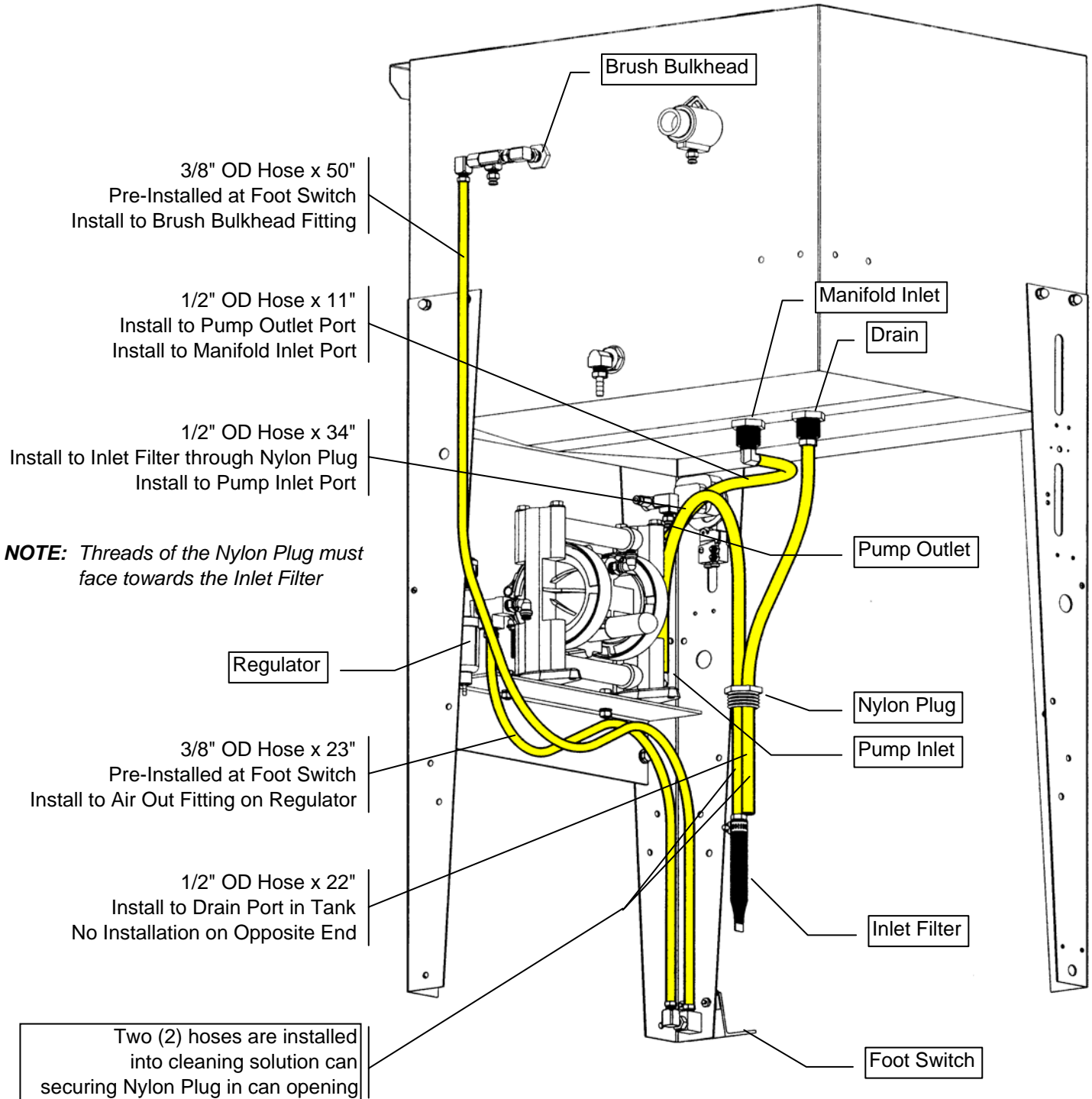
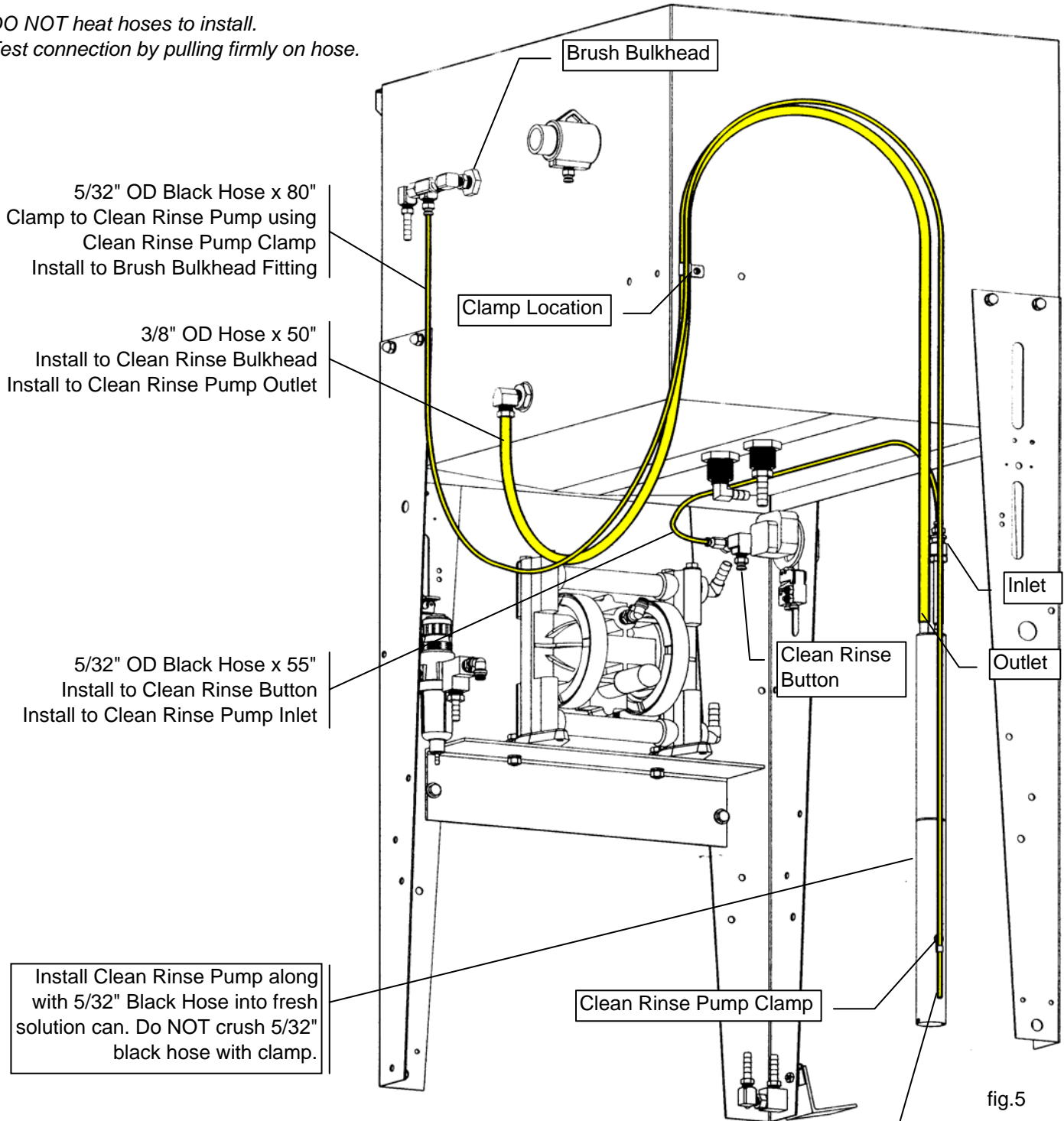


fig.4

# Assembly

Fig.5 shows the unit without the rear left leg and excludes all hoses other than those called out.

DO NOT heat hoses to install.  
Test connection by pulling firmly on hose.



5/32" Black Hose must be installed so that the open end is approximately 1/2" from the bottom of the Clean Rinse Pump

# Assembly

Fig.6 shows the unit without the rear left leg and excludes all hoses other than those called out and Pre-Installed hoses on Timer Leg.

DO NOT heat hoses to install.  
Test connection by pulling firmly on hose.

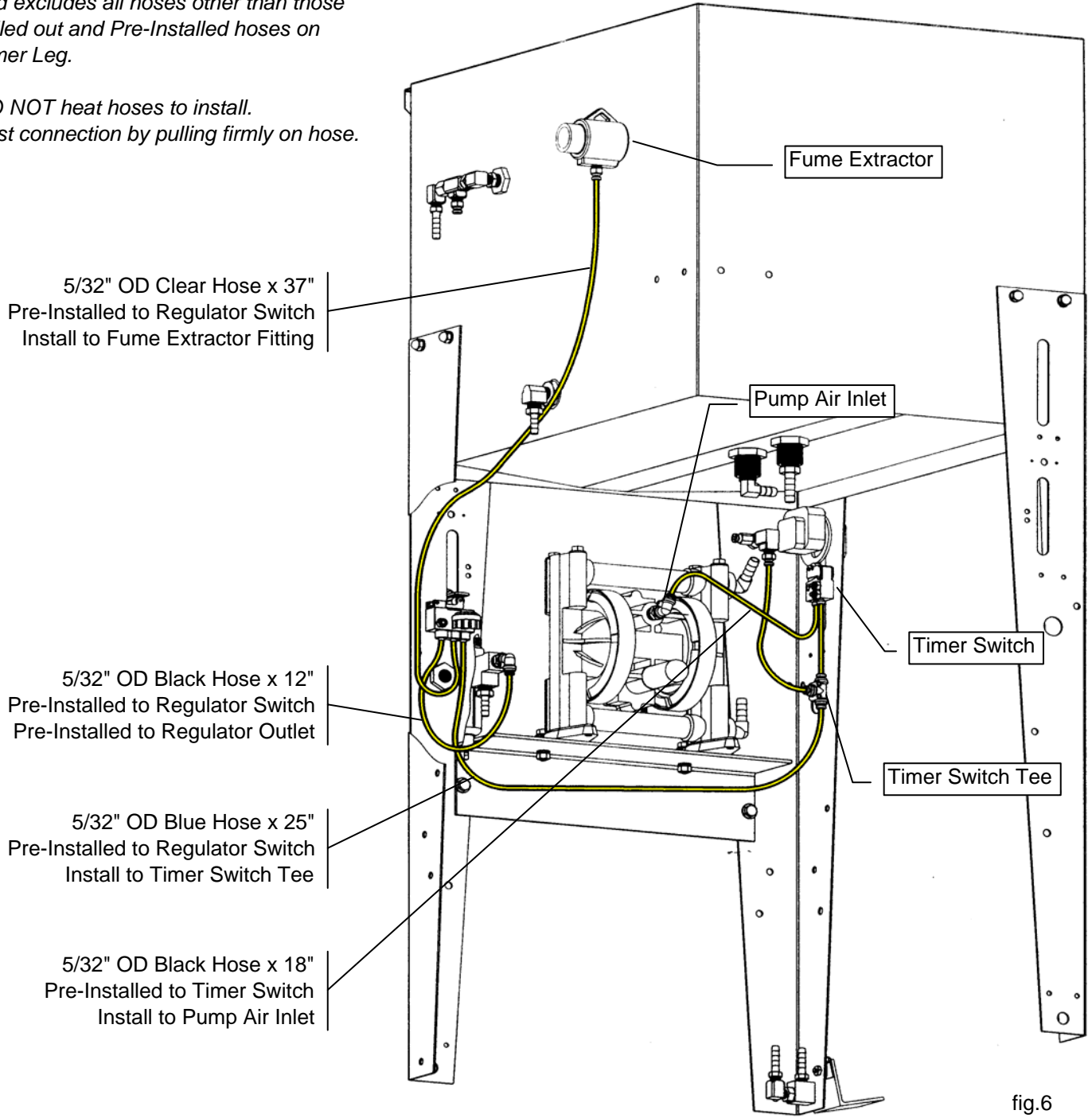


fig.6



# Assembly

## Lid Assmibly

### STEP 6

Install the Handle (10A) and Lid Bracket (1002744) to the lid using (4) x Screw 10-24x1/2 SS (005-131), (4) x Nylon Flat Washer (1002656) and (4) x Hex Nut 10-24 SS (005-132) (see fig.8).

### STEP 7

Slide the Actuator (11957) over the Lid Rod (1002572) opposite the drilled end and hand tighten approximately 3" from the end (see fig.9).

### STEP 8

Insert the Actuator into the lower slot in the right rear leg, above the filter/regulator assembly (see fig.9).

### STEP 9

Attach the Lid Rod to the Lid Bracket using (1) x 1/4" Clevis Pin (1000652) and (1) x Cotter Pin (1000252) (see fig.11).

*NOTE: Lid Rod mounts to the back side of the bracket.*

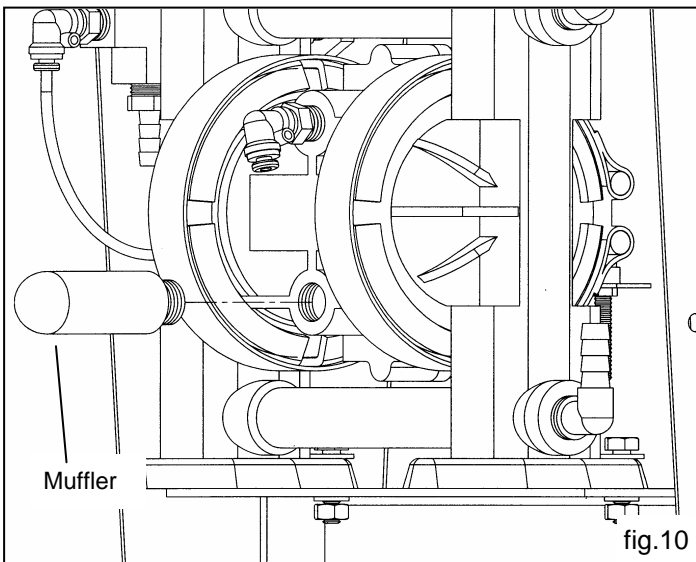
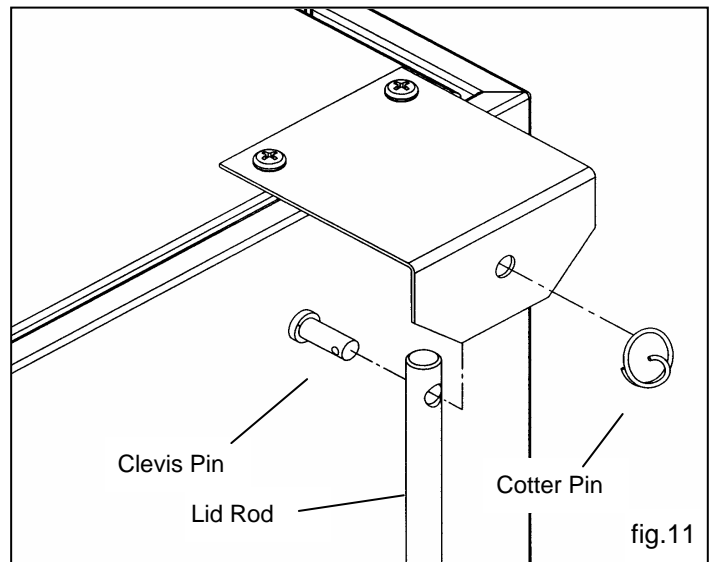
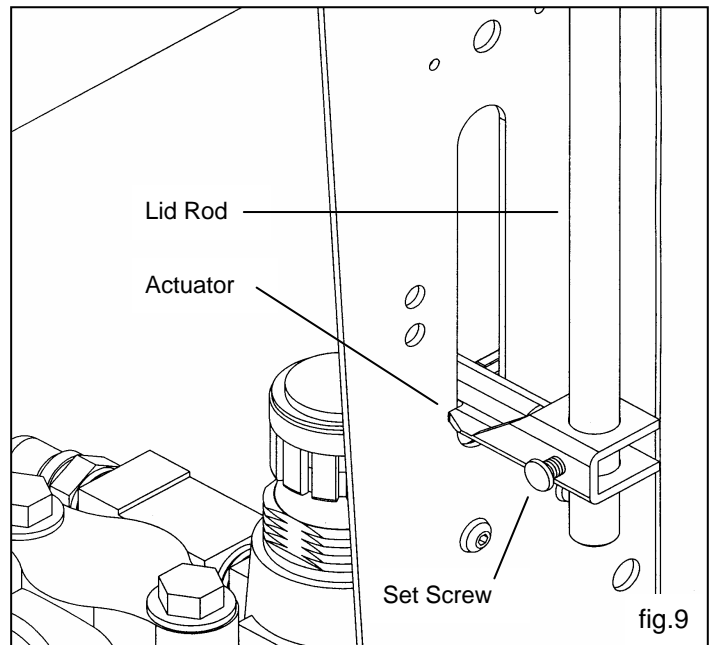
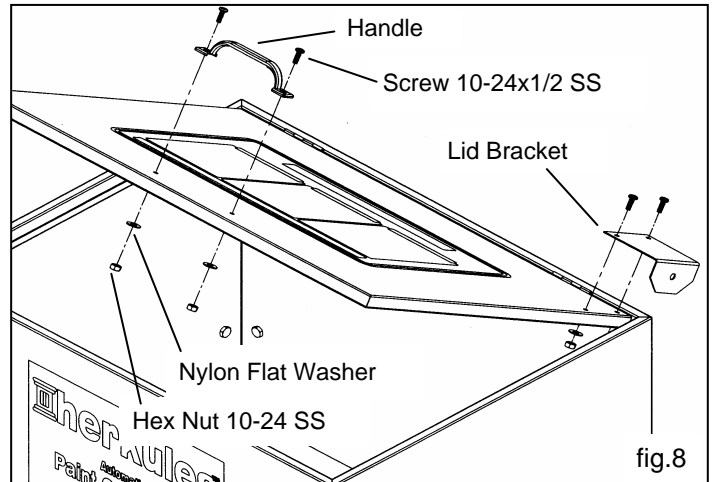
### STEP 10

To adjust the actuator, close the lid and loosen the set screw on the actuator. Slide the actuator down until it completely closes the limit valve and retighten the set screw (see fig.9).

## Muffler Assembly

### STEP 11

Install the included white plastic muffler to the back of the pump (see fig.10).

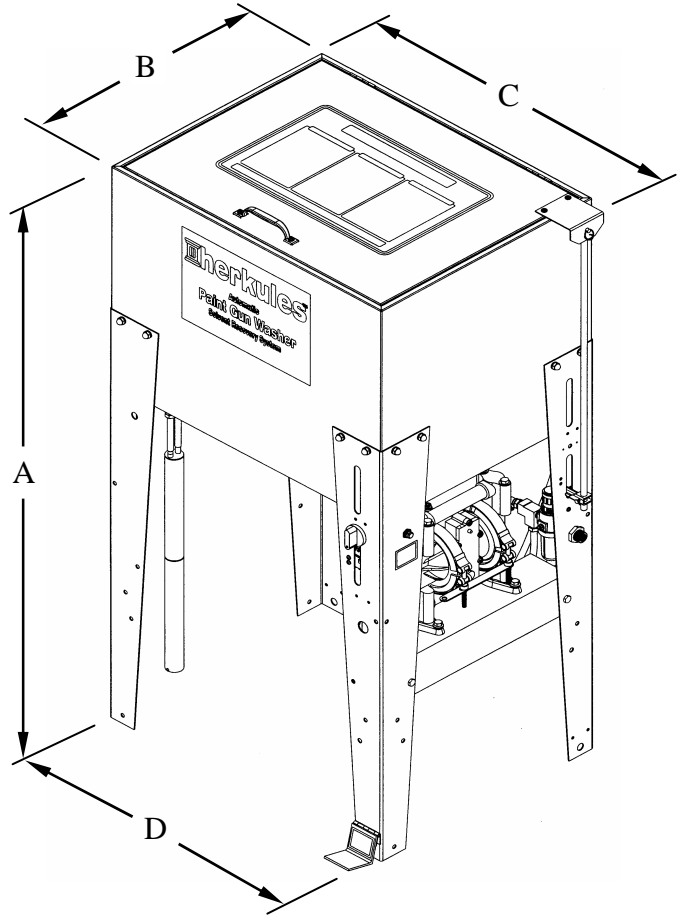


*NOTE: Hoses not shown in fig.10 for clarity.*

# Model Information

## Parts bag contents

83	Hex bolt 1/4-20 x 1" - Zinc	4 ea.
84	Hex nut 1/4-20 - Zinc	4 ea.
85	Lock washer 1/4" - Zinc	20 ea.
11130	Plug with slot - White	1 ea.
11243	Filter assembly	1 ea.
11957	Actuator	1 ea.
1000252	Cotter pin	1 ea.
1000652	Clevis pin	1 ea.
1002149	Tube clamp	1 ea.
1002656	Flat washer #10 - Nylon	4 ea.
1002744	Lid bracket	1 ea.
1002751	Hex bolt 1/4-20 x 1/2" - SS	16 ea.
001-705	Flat washer 1/4" - Zinc	4 ea.
002-161	Flat washer #10 - Zinc	1 ea.
005-131	Screw 10-24 x 1/2" - SS	4 ea.
005-132	Hex nut 10-24 - SS	4 ea.
008-244	Acorn nut 1/4-20 - Nickel	16 ea.
10A	Handle	1 ea.
53B	Stem support	2 ea.
C9A	Nipple 1/8 npt x 4-1/2"	2 ea.
M230-002	Timer knob	1 ea.
M230-005	Spacer 1/8" - Nylon	1 ea.
M5-BLACK	Tube 5/32" - Black	80 in.
M5-BLACK	Tube 5/32" - Black	65 in.



**NOTE:** Dimensions listed are overall measurements.

Model	Description	Weight lbs/(kg)	Dimensions in./ (mm)			
			A	B	C	D
<b>G405</b>	Two gun, two cup paint gun washer equipped with diaphragm pump, filter-regulator, timer, manual brush, clean rinse system, and fume extractor. Cleans both solvent and water based paints.	50 (22.7)	42.2 (1072)	17.3 (440)	23.8 (605)	22.25 (565)

# Installation

## Installing the Gun Washer

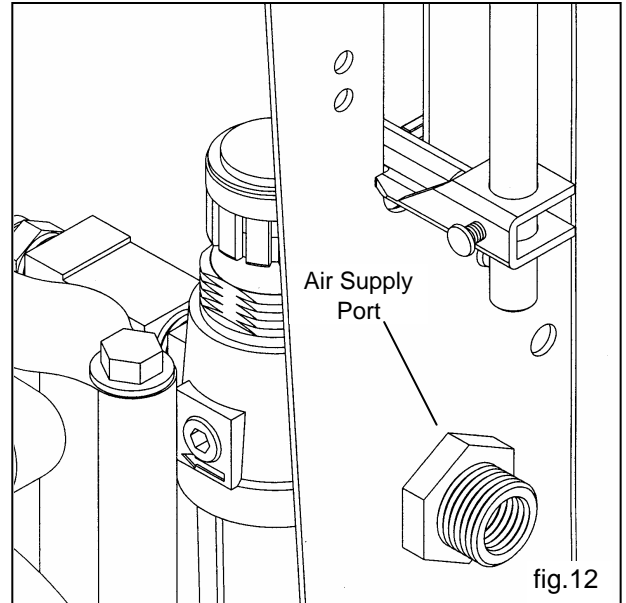
- 1) Place gun washer on a level surface in a properly ventilated paint mixing room or paint booth.

## Grounding the Gun Washer

- 1) Connect the ground wire on the gun washer's pump to a true earth ground.
- 2) Ground all equipment used or located in the gun washer area.

## Connecting the Air Line

- 1) Install a 1/4 in. npt male coupler, that is compatible with the quick disconnect of your air supply line, into the air supply port of the filter/regulator located on the right rear leg (see fig.12).
- 2) Connect air line with at least 75 psi to the coupler. Filter/regulator is preset. Do not adjust.



## Installing the Fume Extractor Exhaust Hose

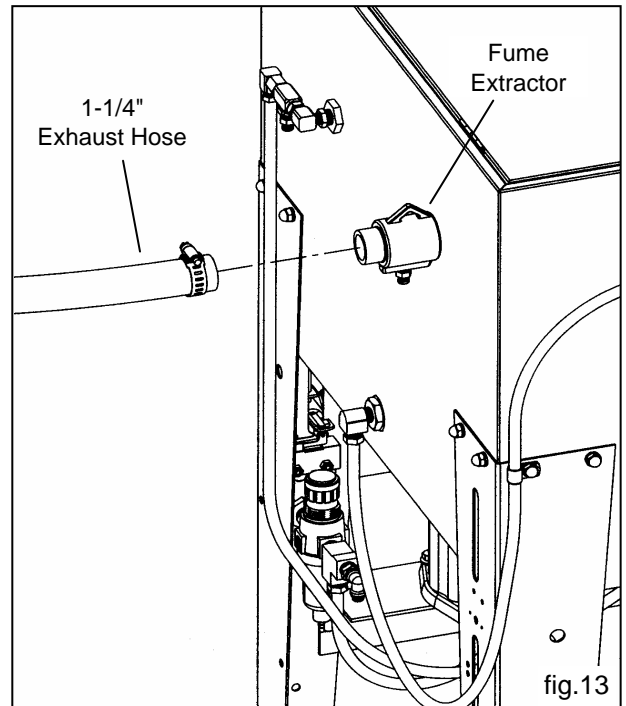
- 1) Attach a 1-1/4" exhaust hose (not included) to the fume extractor on the back of the gun washer (see fig.13).

*NOTE: Use a hose clamp on the exhaust hose to ensure a satisfactory connection.*

- 2) Run the other end of the exhaust hose to the exhaust of the shop paint booth.

*NOTE: DO NOT operate the gun washer without connecting the exhaust hose.*

The Fume Extractor will activate whenever the lid is open.



# Operation

## Connecting the Solvent to the Washer

- 1) Insert the drain pipe and siphon tube into a fresh 5 gallon solvent can and secure the plug in the opening.
- 2) The can must contain at least 4 gallons of solvent to pump properly. Use a high quality solvent.

## Preparing the Equipment to be washed

- 1) Remove paint cup or paint line and the air line from the paint gun.
- 2) Drain excess paint from cup and gun.
- 3) Remove all gauges and regulators from painting equipment.
- 4) Lock the gun trigger in the open position by placing the trigger lock around the gun handle and trigger (see fig.14).

## Placing Equipment in the Gun Washer

To clean guns not mentioned here, use the long or short stem supports as needed (see pg.18). For questions or adapter kits contact your paint gun washer distributor.

### Siphon Feed Guns

Place the gun siphon tube on the short stem support.

### Gravity Feed Guns (HVLV)

Place the long stem support over the short stem support. Place paint inlet of gun on long stem support. Place the air cap assembly over the air inlet of the gun to prevent solvent from entering the passage.

### Pressure Feed Guns

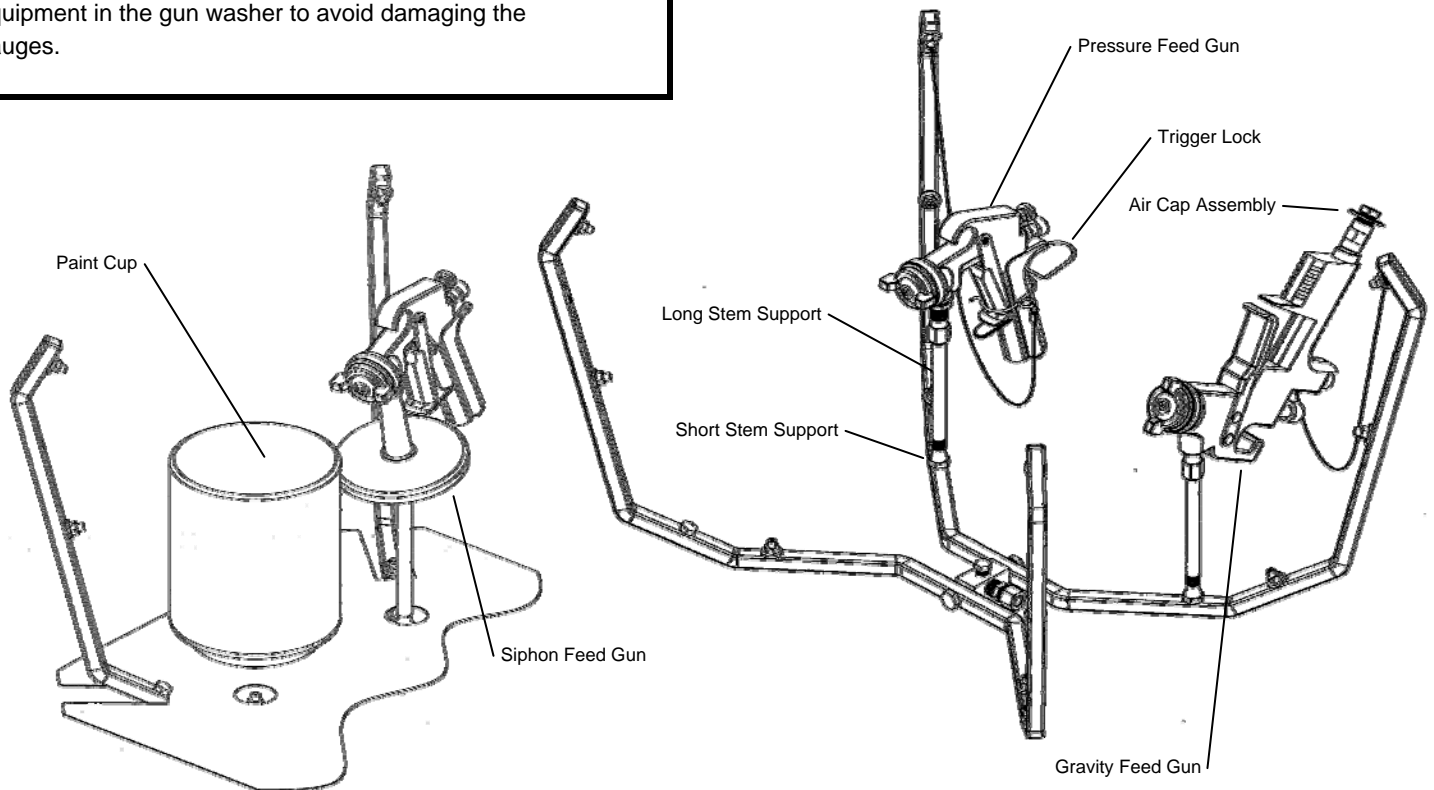
Place long stem support over the short stem support. Place paint inlet of gun on long stem support.

### Pots and Cups

Place a pot or a cup on the cup holder.

## ⚠ CAUTION

All pressure gauges must be removed before placing the equipment in the gun washer to avoid damaging the gauges.



*Note:  
Only one gun & one cup shown for clarity.  
G400 will clean two guns & two cups  
simultaneously. Clean rinse connections not shown  
for clarity.*

fig.14

# Operation

## Operating the Gun Washer

- 1) Make sure wire trigger locks and other accessories are inside the gun washer tank.
- 2) Place equipment in the tank according to the diagrams shown in fig.14.
- 3) Close the gun washer lid.
- 4) Turn the timer knob clockwise 90 degrees to start the gun washer. The gun washer will run for 90 seconds. Turning the timer knob less than 90 degrees will reduce the timing cycle. Paint equipment will clean in 60 to 90 seconds.
- 5) If the lid is opened prior to the end of the timing cycle, the safety air cutoff switch will stop the gun washer. The gun washer will start again when the lid is closed if time remains on the timer.  
*Note: Open the lid slowly to minimize vapor escape.*
- 6) Remove the equipment from the gun washer and wipe off any remaining solvent.

## Operating the Manual Brush

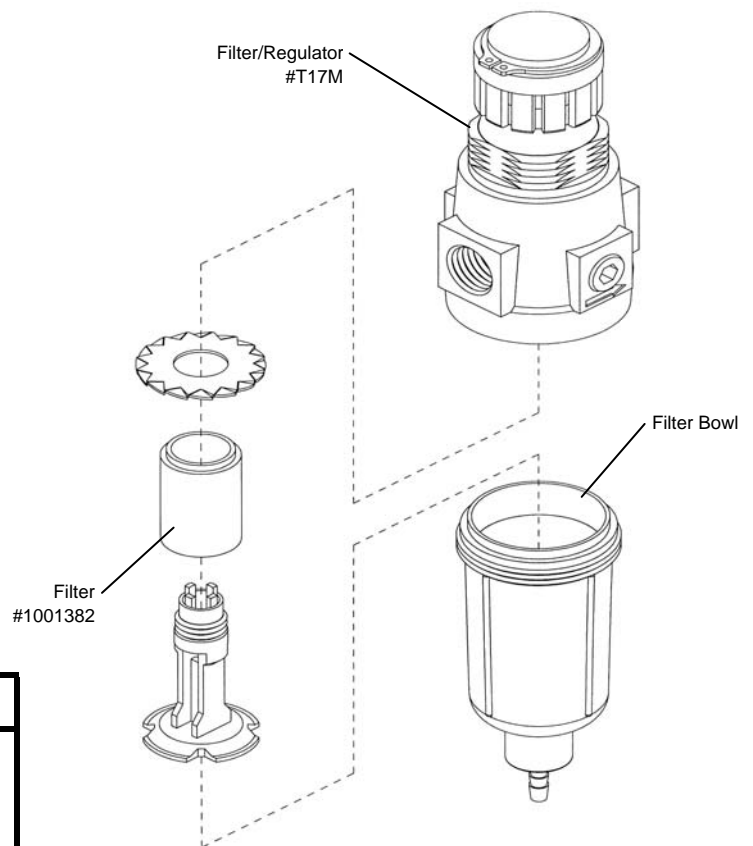
- 1) Make sure brush is not hanging or pointing out of tank.
- 2) Step on foot pedal on right front leg to activate brush.
- 3) Clean parts as necessary then release foot pedal.
- 4) Remove the equipment from the gun washer and wipe off any remaining solvent.

## Operating the Clean Rinse

- 1) Make sure lid is fully closed.
- 2) Press the Clean Rinse button on the right front leg of the gun washer.
- 3) Hold the button for 3-6 seconds to allow enough clean solvent to cycle through the unit.
- 4) Remove the equipment from the gun washer and wipe off any remaining solvent.

# Preventive Maintenance

- 1) Drain excess paint from cup or pot before placing in gun washer.
- 2) Drain paint sludge from 5 gallon solvent can weekly. Do this after a weekend so the sludge has settled.
  - Access the solvent can by removing the drain hose from the can, then remove the nylon plug from the can.
  - Pour the solvent into a second container and drain the sludge into a disposal container. Refill can from the second container and add solvent to reach the 4 gallon minimum, or 3" from the top of can.
  - Clean siphon tube with cloth and brush to remove residue.
- 3) Remove the filter bowl and check the filter inside the regulator for excess buildup approx. every 6 months.
- 4) Change solvent completely when objects being cleaned become tacky to the touch.
- 5) Clean inside of tub and internal manifold.



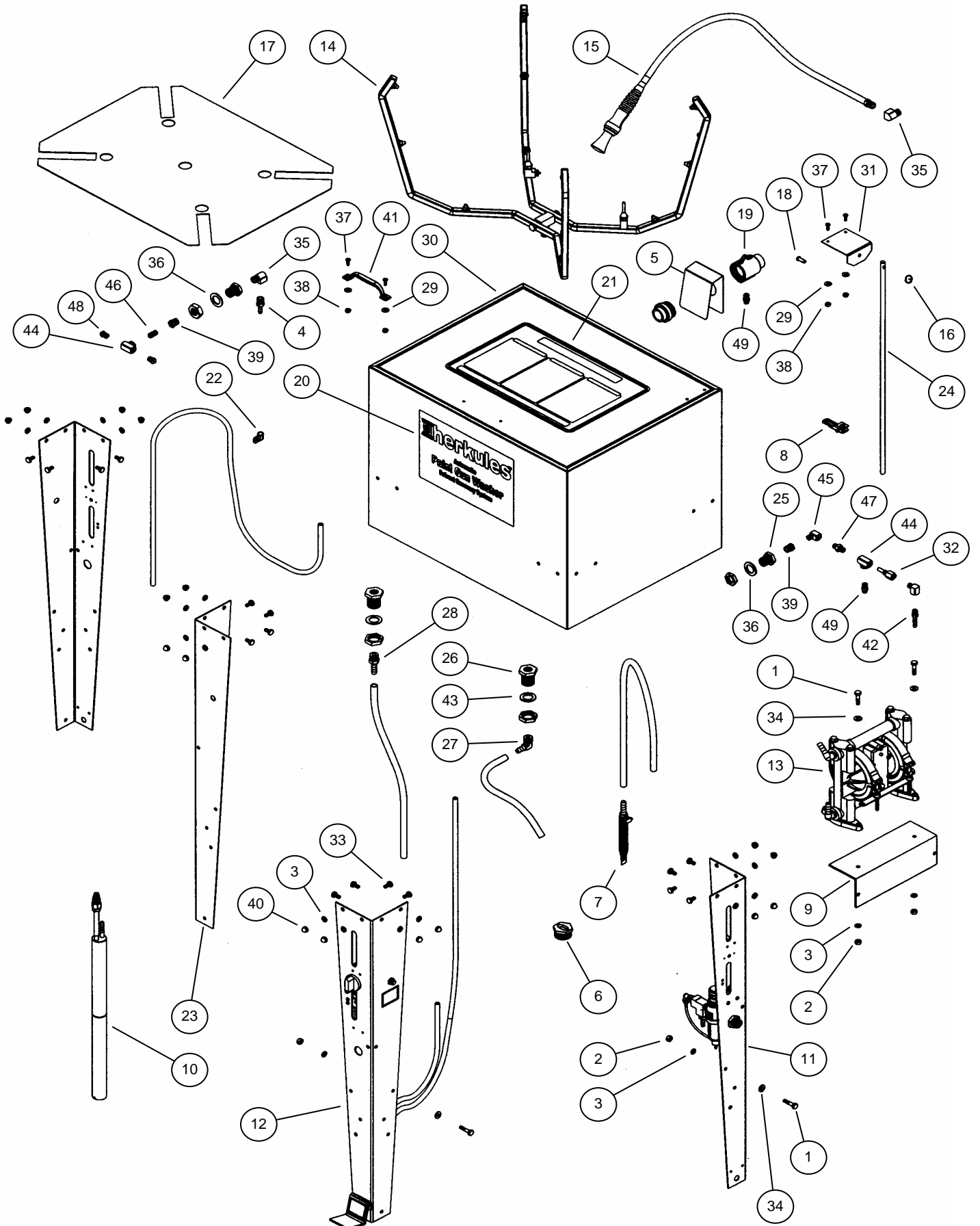
## **CAUTION**

Do not change the setting of the filter/regulator. This could damage the filter/regulator or pump

# Troubleshooting

Problem	Possible Solution
Gun washer will not turn on.	<ol style="list-style-type: none"> <li>1 Make sure the air line is properly connected with at least 75 psi. Air pressure is regulated at 75 psi.</li> <li>2 Make sure lid is fully closed. Make sure the lid rod actuator is making full contact with the limit valve on the right rear leg.</li> <li>3 Check all air connections to ensure that there are no leaks.</li> <li>4 Make sure timer cam is engaging the limit valve on the right front leg.</li> <li>5 Make sure timer is on and functioning correctly.</li> </ol>
Gun washer turns on but pumps slowly or not at all.	<ol style="list-style-type: none"> <li>1 Make sure intake filter is not clogged (Clean or replace).</li> <li>2 Make sure the air line is properly connected with at least 75 psi. Air pressure is regulated at 75 psi.</li> <li>3 Check all air connections to ensure that there are no leaks.</li> <li>4 Make sure there is 5 gallons of clean solution in the gun washer. The cleaning solution should be an inch above the intake filter.</li> <li>5 Make sure lid is fully closed. Make sure the lid rod actuator is making full contact with the limit valve on the right rear leg.</li> <li>6 Make sure manifold nozzles and stem supports are not clogged.</li> </ol>
Gun washer will not shut off.	<ol style="list-style-type: none"> <li>1 Make sure timer cam is moving. If its not, slightly loosen the nuts holding the limit valve on the right front leg of the stand. Reposition valve and tighten nuts.</li> <li>2 Make sure limit valves located on the right front leg or right rear leg of the stand are not stuck in closed position.</li> </ol>
Manual Brush will not operate.	<ol style="list-style-type: none"> <li>1 Make sure foot lever is fully depressing valve on right front leg.</li> <li>2 Check all air connections to ensure that there are no leaks.</li> <li>3 Make sure there is enough solvent in clean rinse can.</li> </ol>
Clean Rinse will not operate.	<ol style="list-style-type: none"> <li>1 Make sure lid is fully closed. Make sure the lid rod actuator is making full contact with the limit valve on the right rear leg.</li> <li>2 Check all air connections to ensure that there are no leaks.</li> <li>3 Make sure stem supports are not clogged.</li> <li>4 Make sure there is enough solvent in clean rinse can.</li> </ol>

# G405 Parts Layout

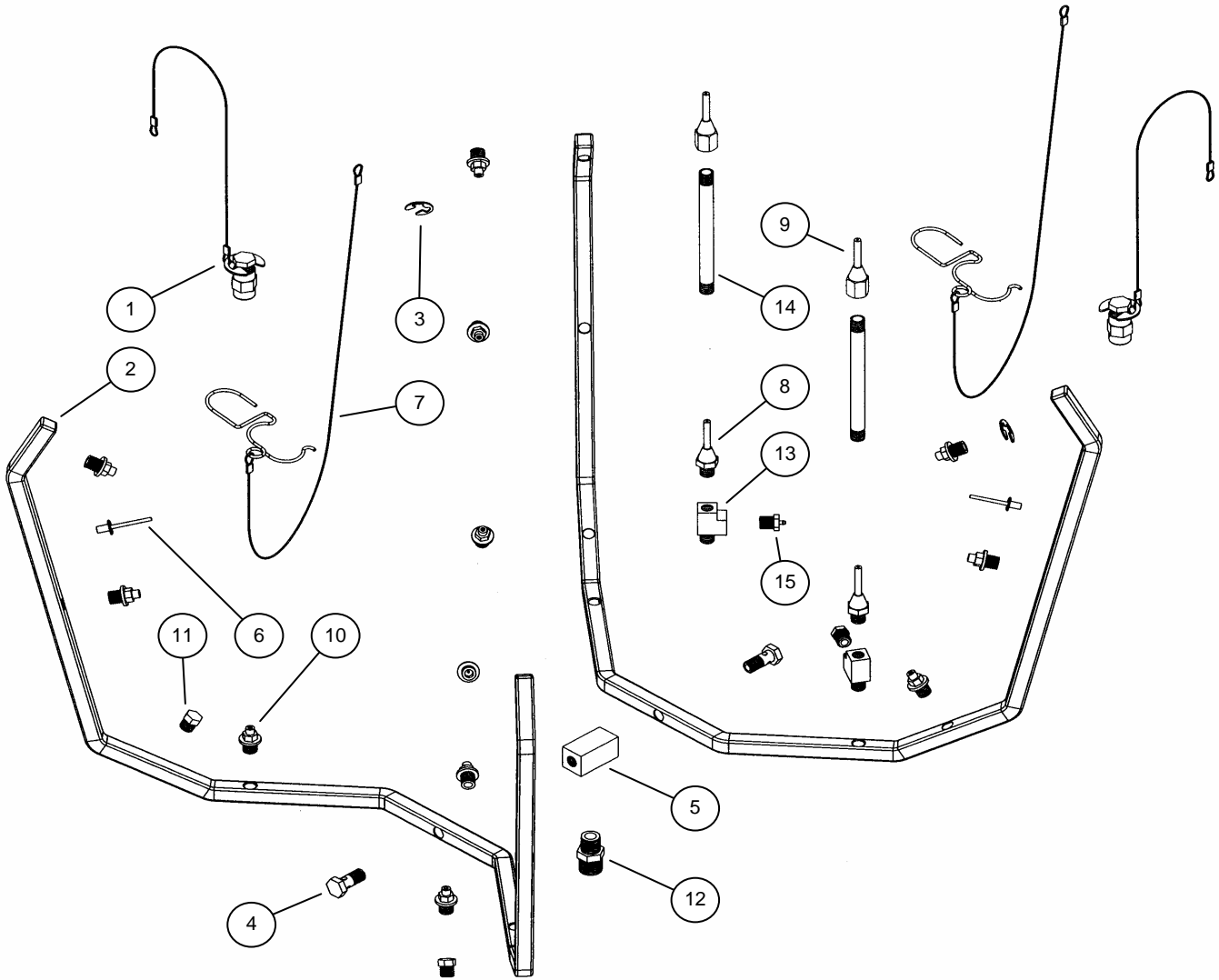


# G405 Parts Layout

Part #	Description	Quantity	
1	83	BOLT HEX FULL 1/4-20 X 1 GD5 Z	4 EA.
2	84	NUT HEX 1/4-20 Z	4 EA.
3	85	WASHER LOCK 1/4 Z	20 EA.
4	990	HOSE BARB 1/4 X 1/4 NPT BRASS	1 EA.
5	11049	BENT FUME EXTRACTOR BAFFEL S.S.	1 EA.
6	11130	PIPE PLUG ASSY W/SLOT FOR O500	1 EA.
7	11243	FILTER ASSEMBLY FOR O500	1 EA.
8	11957	ACTUATOR NOTCHED FOR GWR	1 EA.
9	11958	BRACKET PUMP MOUNT FOR GWR	1 EA.
10	12763	PUMP ASSEMBLY CLEAN RINSE	1 EA.
11	12764	LEG ASSEMBLY FILTER FOR SS GWR	1 EA. See pg. 20
12	12768	LEG ASSEMBLY TIMER FOR SS GWR	1 EA. See pg. 19
13	12771	PUMP ASSEMBLY FOR G300/G400	1 EA. See pg. 21
14	12772	MANIFOLD ASSEMBLY FOR G400	1 EA. See pg. 18
15	12773	MANUAL BRUSH ASSEMBLY	1 EA.
16	1000252	COTTER PIN - CIRCLE Z	1 EA.
17	1000540	DIVIDER W/SLOTTED CORNER SS	1 EA.
18	1000652	CLEVIS PIN 1/4 X 5/8 Z	1 EA.
19	1000948	AIR INDUCTOR 1 PLASTIC	1 EA.
20	1001706	DECAL HERKULES GW/R-T	1 EA.
21	1001709	STICKER LID ( SS)	1 EA.
22	1002149	TUBE CLAMP 3/8 ID X 1/2" WIDE	1 EA.
23	1002378	LEG FOR GUN WASHERS	2 EA.
24	1002572	ACTUATOR ROD 24.00	1 EA.
25	1002643	BULKHD 3/4-16UNS X 1/4 NPT W/NUT BR	2 EA.
26	1002644	BULKHEAD 1-14UNS X 3/8 NPT W/NUT BR	2 EA.
27	1002650	HOSE BARB 90 DEG 3/8 X 3/8 NPT BR	1 EA.
28	1002654	HOSE BARB 3/8 X 3/8 NPT BRASS	1 EA.
29	1002656	WASHER FLAT #10 NYLON	4 EA.
30	1002676	TANK WELDMENT WITH LID FOR G400 SS	1 EA.
31	1002744	BRACKET ACTUATOR LID MOUNT SS GWR	1 EA.
32	1002745	FITTING VENTURI BRASS	1 EA.
33	1002751	BOLT HEX 1/4-20 X 1/2 SS	16 EA.
34	001-705	WASHER FLAT 1/4 USS Z	4 EA.
35	002-131	ELBOW STREET 1/4 NPT BRASS	2 EA.
36	005-103	WASHER .765 ID X 1.25 OD X.08 NYLON	2 EA.
37	005-131	SCREW PHM PHIL 10-24 X 1/2 SS	4 EA.
38	005-132	NUT HEX 10-24 SS	4 EA.
39	005-134	RED BUSHNG 1/4 NPTx1/8 NPT BR	2 EA.
40	008-244	NUT ACORN 1/4-20 NICKLE	16 EA.
41	10A	HANDLE 4.75 - 2 HOLE	1 EA.
42	730-117	HOSE BARB 1/4 X 1/8 NPT BRASS	1 EA.
43	85B	WASHER 1-1/2 X 1 NYLON	2 EA.
44	C12	TEE 1/8 NPT BRASS	2 EA.
45	M6	ELBOW STREET 1/8 NPT BRASS	2 EA.
46	T21	NIPPLE CLOSE 1/8 NPT BRASS	1 EA.
47	T21B	NIPPLE HEX 1/8 NPT BRASS	1 EA.
48	T24	HOSE BARB .078 X 1/8 NPT BRASS	2 EA.
49	T4	FITTING PTC 5/32 X 1/8 NPT	2 EA.

**NOTE:** For parts shown but not identified refer to assembly layouts on pages 18-21.  
Hoses not called out and some not shown for clarity. Refer to Fluid/Air Schematic on page 9.  
Additional manifold parts not shown for clarity. Refer to Manifold Layout on page 18.

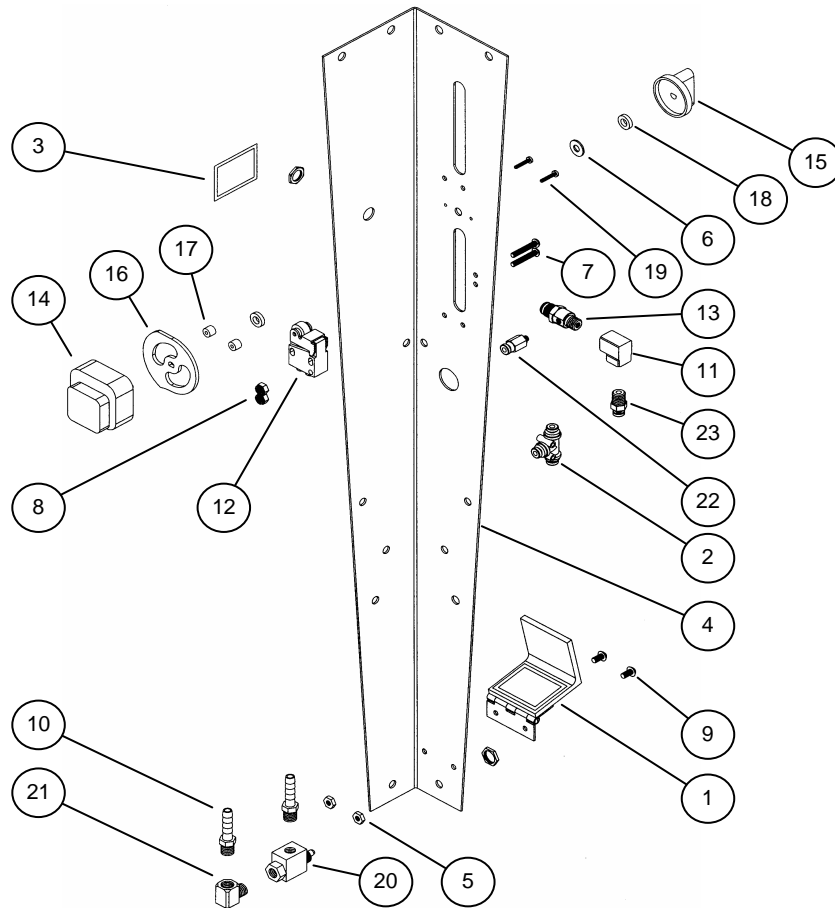
# G405 Manifold Layout



Part #	Description	Quantity
1	12509 AIR CAP ASSEMBLY W/ SS CLIP	2 EA.
-	1001365 BALL CHECK 1/4 OD SS	2 EA.
2	1002321 MANIFOLD HALF SS	2 EA.
3	1002651 E-RING 1/2 SHAFT SS	2 EA.
4	002-136S MANIFOLD BOLT ASSY SS	2 EA.
5	002-137 MANIFOLD BLOCK ASSY BRASS	1 EA.
6	002-192 RIVET 1/8 X 1/4 SS	2 EA.
-	005-145 CONNECTOR 3/8TX1/4NPT BALLCHK BRASS	2 EA.
7	22BA WIRE TRIGGER LOCK ASSY	2 EA.
8	53A STEM SUPPORT MALE	2 EA.
9	53B STEM SUPPORT FEMALE	2 EA.
10	54P1 NOZZLE FULLJET 65DEG 1/8 NPTM KYNAR	12 EA.
11	59 PLUG HEX 1/8 NPT BRASS	2 EA.
12	63 RED NIPPLE 3/8 NPT X 1/4 NPT BRASS	1 EA.
13	C12D TEE STREET 1/8 NPT BRASS	2 EA.
14	C9A NIPPLE 1/8 NPT X 4-1/2 BRASS	2 EA.
15	T24 HOSE BARB .078 X 1/8 NPT BRASS	2 EA.

**Note:** Parts are shown for reference purposes only and are not necessarily part of a Herkules assembly.  
 PN 1001365 Ball Check and 005-145 Ball Check Connector are not shown for clarity.

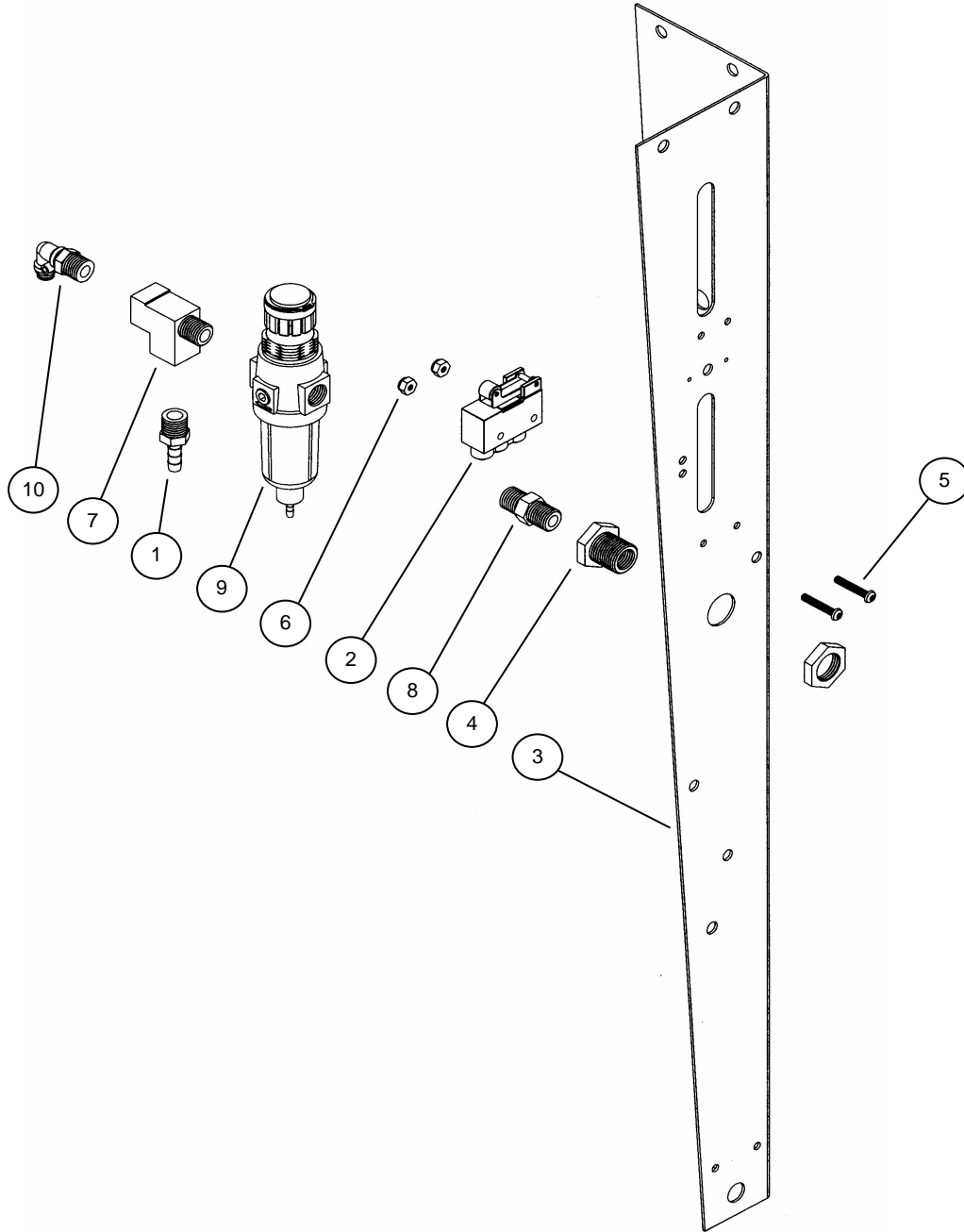
# G405 Timer Leg Layout



Part #	Description	Quantity
1	12765 BRACKET FOOT SWITCH ACTUATOR	1 EA.
2	1000852 TEE PTC 5/32	1 EA.
3	1000970 STICKER RINSE CYCLE	1 EA.
4	1002378 LEG FOR GUN WASHERS	1 EA.
-	1002414 STICKER TIMER ON/OFF FOR GUN WASHER	1 EA.
5	002-160 NUT HEX 10-32 Z	2 EA.
6	002-161 WASHER FLAT #10 USS Z	1 EA.
7	002-171 SCREW BHSC 8-32 X 1 BLACK	2 EA.
8	002-172 NUT NYLOCK 8-32 Z	2 EA.
9	005-155 SCREW BHSC 10-32 X 3/8 BLACK	2 EA.
10	730-117 HOSE BARB 1/4 X 1/8 NPT BRASS	2 EA.
11	C4 ELBOW 1/8 NPT BRASS	1 EA.
12	M1C VALVE LIMIT BOTTOM PORT GOLD	1 EA.
13	M2 VALVE LIMIT 10-32 PORTS BRASS	1 EA.
14	M230-001A TIMER MECHCL 6 MIN W/O KNOB	1 EA.
15	M230-002 KNOB FOR MECHANICAL TIMER	1 EA.
16	M230-003 CAM - TIMER 11 GA. MILD STEEL	1 EA.
17	M230-004 SPACER .3125ODx.115IDx.25 NYLN	2 EA.
18	M230-005 SPACER .50ODx .257IDx .125 NYL	2 EA.
19	M230-006 SCREW PHSM PHIL #4 X 5/8 Z	2 EA.
20	M4 VALVE LIMIT PUSH BOTTOM 1/8 NPT BR	1 EA.
21	M6 ELBOW STREET 1/8 NPT BRASS	1 EA.
22	T3 FITTING PTC 5/32 X 10-32	1 EA.
23	T4 FITTING PTC 5/32 X 1/8 NPT	1 EA.

**Note:** Parts are shown for reference purposes only and are not necessarily part of a Herkules assembly.

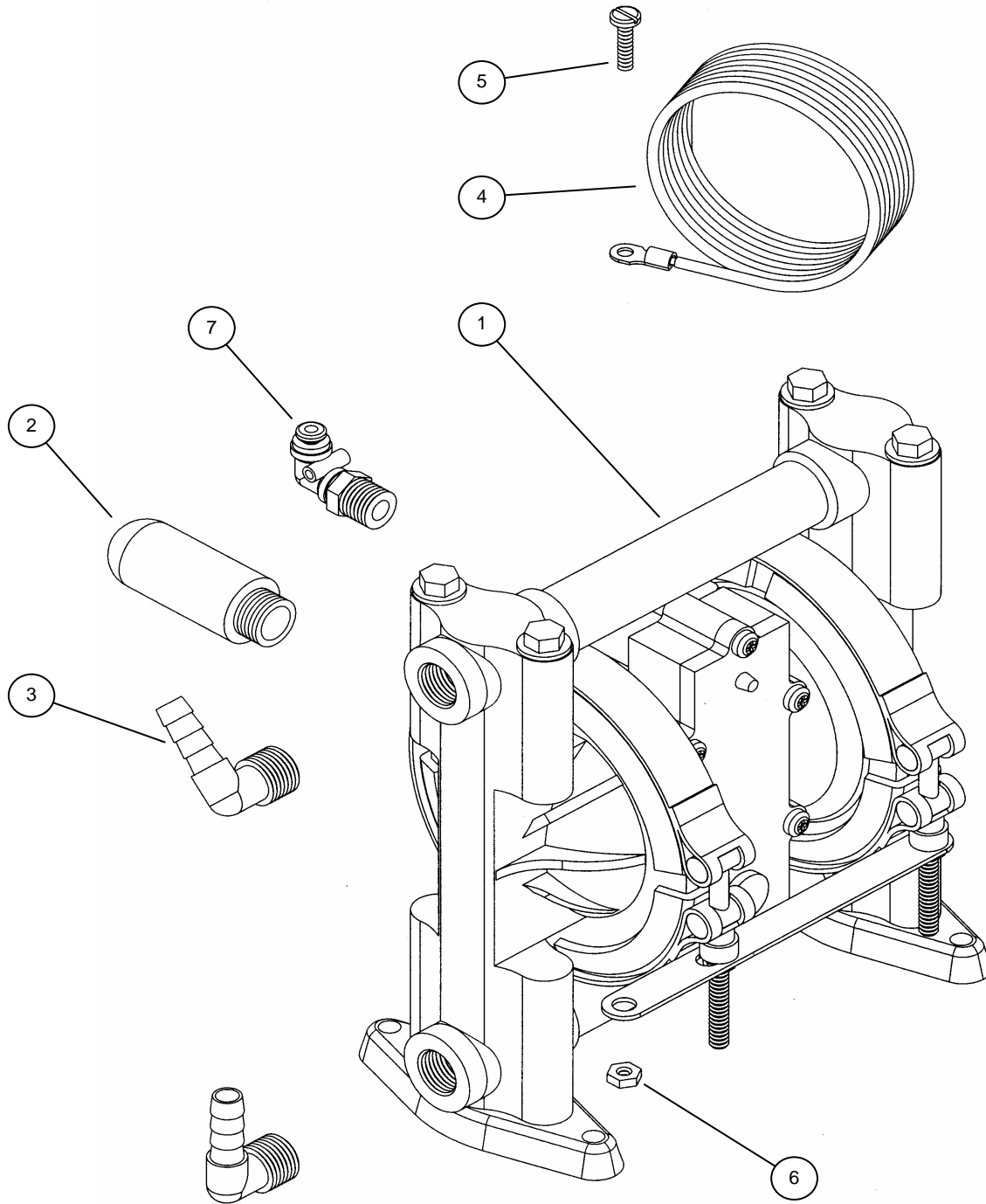
# G405 Filter/Regulator Leg Layout



Part #	Description	Quantity
1	990 HOSE BARB 1/4 X 1/4 NPT BRASS	1 EA.
2	1000905 CONTROL VALVE MINIATURE 3 PORT	1 EA.
3	1002378 LEG FOR GUN WASHERS	1 EA.
4	1002643 BULKHD 3/4-16UNS X 1/4 NPT W/NUT BR	1 EA.
5	002-171 SCREW BHSC 8-32 X 1 BLACK	2 EA.
6	002-172 NUT NYLOCK 8-32 Z	2 EA.
7	C12CX TEE STREET 1/4 NPT BRASS	1 EA.
8	M25 NIPPLE HEX 1/4 NPT BRASS	1 EA.
9	T17M FILTER/REG ASSY-METAL SET 75 PSI	1 EA.
10	T25 FITTING PTC 90D SVL 5/32x1/4NPT	1 EA.

**Note:** Parts are shown for reference purposes only and are not necessarily part of a Herkules assembly.

# G405 Pump Layout



	Part #	Description	Quantity
1	338	PUMP DIAPHRAGM GROUNDABLE 3/8 PORTS	1 EA.
2	1000204	MUFFLER 3/8 PLASTIC	1 EA.
3	1002650	HOSE BARB 90 DEG 3/8 X 3/8 NPT BR	2 EA.
4	002-120A-72	WIRE ASSY 12 GAx72 G/W/Y STRIPE	1 EA.
5	005-131	SCREW PHM PHIL 10-24 X 1/2 SS	1 EA.
6	005-132	NUT HEX 10-24 SS	1 EA.
7	T25	FITNG PTC 90D SVL 5/32x1/4NPT	1 EA.

**Note:** Parts are shown for reference purposes only and are not necessarily part of a Herkules assembly.

