

R500



Made in USA

OWNERS MANUAL



This manual contains important information concerning the installation and operation of the gun washers listed above. **Read manual thoroughly and keep for future reference**



Herkules Patent Numbers

These products have patent protection under one or more of the following patent numbers:

9422142, 8733508, 8714524, 866247, 8052120, 7070167, 5485860, 5193561, 5174317, 4960142, 4793369 and Patents Pending

Website: www.herkules.us
E-mail: info@herkules.us

Herkules Equipment Corporation
2760 Ridgeway Court
Walled Lake, MI 48390-1662 USA

Toll Free: 800-444-4351
Phone: 248-960-7100
Fax: 248 960-7109

Table of Contents

Warranty 3

Model Information 4

Warnings 5 - 6

Installation 7

Operation 8

Preventative Maintenance 9

Troubleshooting 9

Drawings with Part Lists 10-12

Herkules Equipment Corporation

A U.S.-based manufacturer, Herkules Equipment Corporation offers a diverse line of products that support multiple industries by improving efficiency, productivity, ergonomics, comfort, and safety in the work environment. The company consists of the three product lines: Herkules, Enkon and BossLifts.

Since 1985, Herkules has designed, engineered and manufactured quality products at our Walled Lake, Michigan facility. Our company supports our products after delivery, with U.S. based customer service, and replacement parts, enabling our customers to proceed with confidence.

To learn more about Herkules, visit <http://herkules.us>. Contact us at info@herkules.us with any questions or concerns.

Thank you for purchasing a Herkules product!

Warranty

IMPORTANT NOTICE: if you have a problem with your Herkules product,

DO NOT RETURN TO PLACE OF PURCHASE

Contact Herkules: by phone 1-800-444-4351; by email, info@herkules.us; or on the web at herkules.us/contact-us.

At Herkules we take great pride in the construction of our American-made products, and we stand behind their reliability. Our limited liability warranty coverage for Paint Gun Washers warranties the unit for a period of 12 months. Washer pumps have a separate warranty; the Herkules 338 pump is protected for a period of 2 years from the date of purchase. All other pumps, including rinse pumps, are warranted for 12 months.

This warranty does not apply to equipment damaged from accident, abuse, overload, misuse, negligence, improper installation, abrasive or corrosive materials, or shipping damage.

In the event of product failure, the defective item must be returned, freight prepaid, to the Herkules manufacturing plant for repair or replacement. If repairs are required, Herkules will not be liable for these repairs to take place in the field regardless of the application. Proof of purchase and date of purchase must be confirmed. An RGA* (Returned Goods Authorization) and written approval from Herkules must be obtained before any goods can be shipped to Herkules. We reserve the right to Determine whether failure is due to defective material, normal wear, and / or other causes.

There are no warranties which extend beyond the description on the face hereof. Herkules disclaims any warranty of merchantability or fitness for a particular purpose in connection with the Buyer's purchase of any Product under this agreement. Damages are limited to the sales price of the Herkules system. The terms and conditions herein represent the entire agreement between Herkules and the Buyer. Any prior / future representations do not apply.

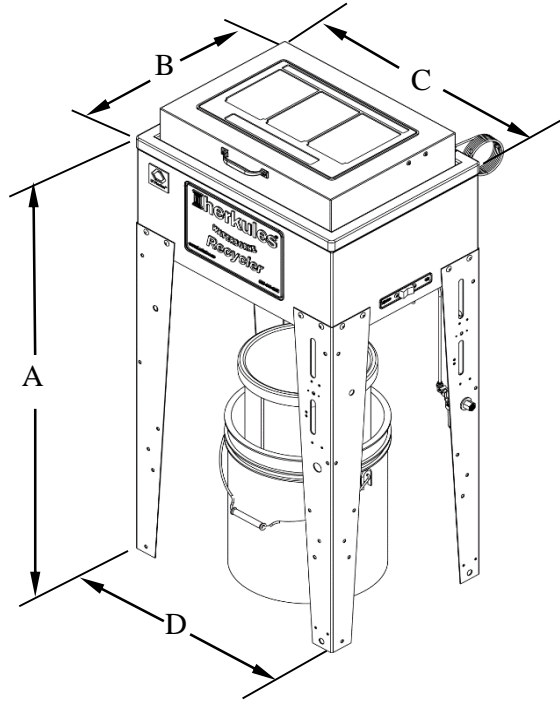
*To obtain a RGA, contact Herkules at 1-800-444-4351 and have the item model, serial numbers, and invoice number if applicable.

Upon receipt of your equipment, please write your purchase information below. Please retain this manual for your records.

Serial Number _____ Model Number _____

Purchase Date _____ Distributor (if applicable) _____

Model Information



NOTE: Dimensions listed are overall measurements.

Model	Description	Weight lbs/(kg)	Dimensions in./(mm)			
			A	B	C	D
R500	Waterborne Recycler Manual	44 (20)	39.7 (1009)	16.2 (411)	20.5 (521)	20.4 (516)

Warning Symbol



This symbol alerts you to the possibility of serious injury or death if you do not follow the instructions.

Caution Symbol



This symbol alerts you to the possibility of damage to or destruction of equipment if you do not follow the instructions.



WARNING



EQUIPMENT MISUSE HAZARD

Equipment misuse can cause the equipment to rupture, malfunction, or start unexpectedly and result in serious injury.

- This equipment is for professional use only.
- Read all instruction manuals, tags, and labels before operating the equipment.
- Use the equipment only for its intended use.
- Do not alter or modify this equipment.
- Do not exceed the maximum working pressure of the lowest rated system component.
- Route the hoses away from traffic areas, sharp edges, moving parts, and hot surfaces.
- Do not use the hoses to pull the equipment.
- Do not move pressurized equipment.
- Comply with all applicable local, state and national fire, electrical and other safety regulation.



PRESSURIZED EQUIPMENT HAZARD

Spray from hose leaks or ruptured components can splash fluid in the eyes or on the skin and cause serious injury.

- Do not stop or deflect fluid leaks with your hand, body, glove, or rag.
- Tighten all fluid connections before operating the equipment.
- Replace worn, damaged, or loose parts immediately.



WARNING



FIRE AND EXPLOSION HAZARD



Improper grounding, poor air ventilation, open flames, or sparks can cause a hazardous condition and result in fire or explosion and serious injury.

- Ground the equipment. See Installation for grounding procedure.
- Provide fresh air ventilation to avoid the build up of fumes.
- Extinguish all open flames or pilot lights in the Recycler area.
- Disconnect all electrical equipment in the Recycler area.
- Keep the Recycler area free of debris, including cleaning solutions, rags, and gasoline.
- Do not turn on any light switch in the Recycler area while operating or if fumes are present.
- Do not smoke in the Recycler area.
- Do not operate a gasoline engine in the Recycler area.
- If there is any static sparking while using the equipment, **stop operation immediately**. Identify and correct the problem.



TOXIC FLUID HAZARD

Hazardous fluids or toxic fumes can cause serious injury or death if splashed in eyes or on the skin, swallowed, or inhaled.

- Know the specific hazards of the fluid you are using. Read the fluid manufacturer's warnings.
- Store hazardous fluid in an approved container. Dispose of hazardous fluid according to all local, state and national guidelines.
- Wear the appropriate protective clothing, gloves, eyewear and respirator.

Installation

Installing the Recycler

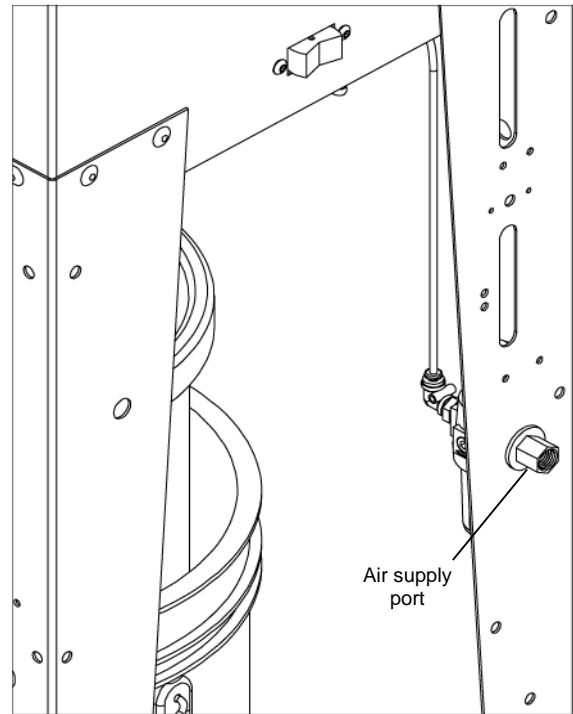
- 1) Place recycler on a level surface in a properly ventilated paint mixing room or paint booth.

Grounding the Recycler

- 1) Connect the ground wire on the Recycler's lid to a true earth ground.
- 2) Ground all equipment used or located in the Recycler area.

Connecting the air line

- 1) Install a 1/4 in. npt male coupler, that is compatible with the quick disconnect of your air supply line, into the air supply port of the filter/regulator located on the back right leg.
- 2) Connect air line with at least 75 psi to the coupler. Filter/regulator is preset. Do not adjust.



Operation

Filtering dirty water

- 1) Pour the dirty paint mixture to be recycled into the tank. Do **not** exceed the 5 gallon capacity of the tank.
- 2) Add flocculant / coagulant to the dirty paint mixture. (Herkules CoAgent P/N CA01 recommended).

NOTE: Herkules CoAgent recycling coagulant along with inner and outer filter bags can be purchased online at www.herkules.us

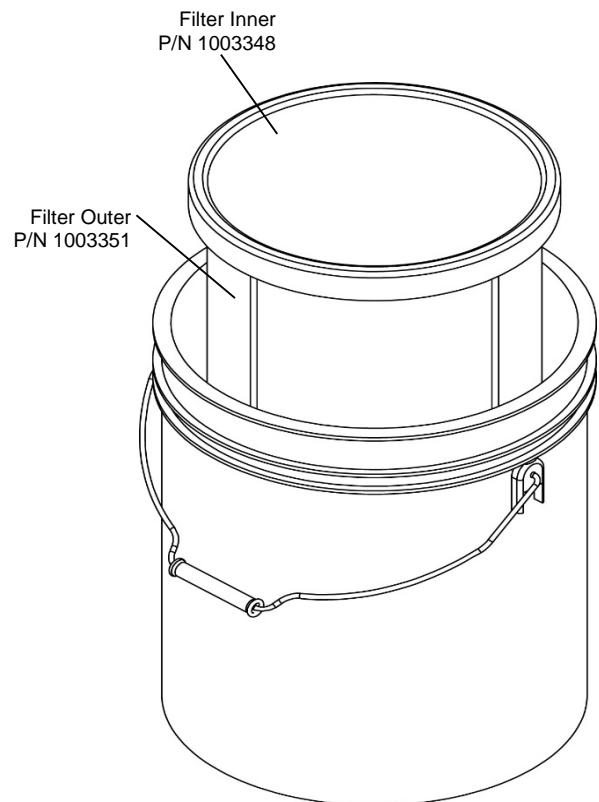
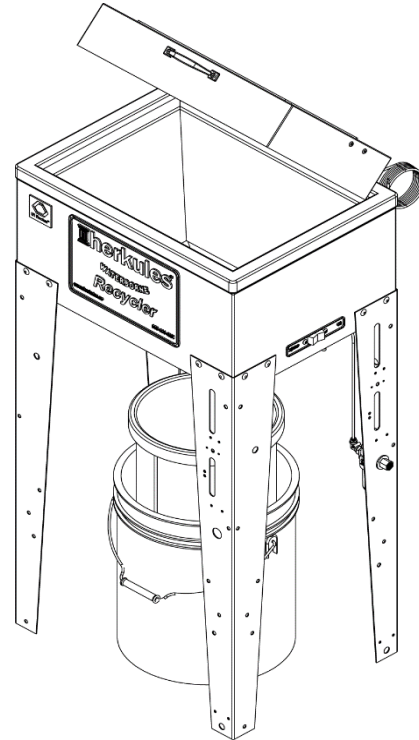
- 3) If using Herkules CoAgent P/N CA01, add 1 tablespoon per 5 gallons of dirty paint mixture.
- 4) Set the switch on the side of the Recycler to Agitator. Stir mixture for 30 seconds during agitation. Allow the dirty paint mixture / flocculant mix to agitate for 30 to 120 seconds (dependent upon quality of flocculant). Let the mixture sit for 30 seconds. Return the agitator switch to the Off position.

Note: Repeat process if adequate separation does not occur (dependent upon quality of flocculant).

- 5) Open the ball valve to allow the mixture to drain through the filter bags. The filter bags capture the paint debris, and the bucket captures the filtered cleaning solution / water mixture that can be reused for cleaning.

Note: Reuse the cleaning solution / water mixture until it becomes tacky to the touch. Dispose of all waste materials according to local, state, and federal regulations.

- 6) Empty the paint waste out of the inner filter. Place inner filter back on the filter holder for up to 10 uses.
Note: place solid waste onto a piece of cardboard to finish drying. This will speed the process as the cardboard will absorb the moisture from the paint debris.
- 7) Close the ball valve. Replace filter bags (P/N 1003348 & P/N 1003351) as needed.
- 8) Dispose of all waste materials according to all local, state, and federal regulations.
- 9) Wipe inner tank after each use.



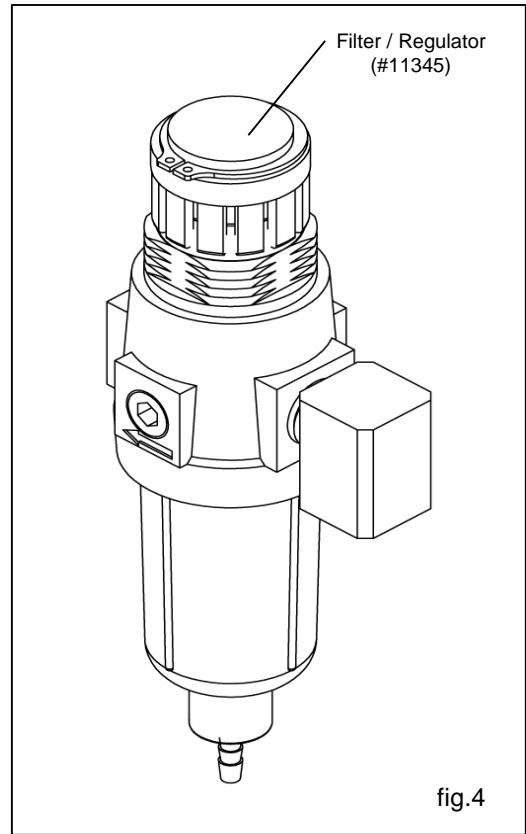
Please refer to www.herkules.us/herkules/product-information/videos for a video on the coagulating and filtering process.

Preventative Maintenance

To keep your machine working efficiently and effectively, please follow these directions.

- 1) Drain water from regulator weekly if you do not have quality dry air.
- 2) Replace Filter/Regulator yearly. (#11345)
- 3) Change cleaning solution / water mixture when objects being cleaned become tacky to the touch.
- 4) Clean inside of tank.

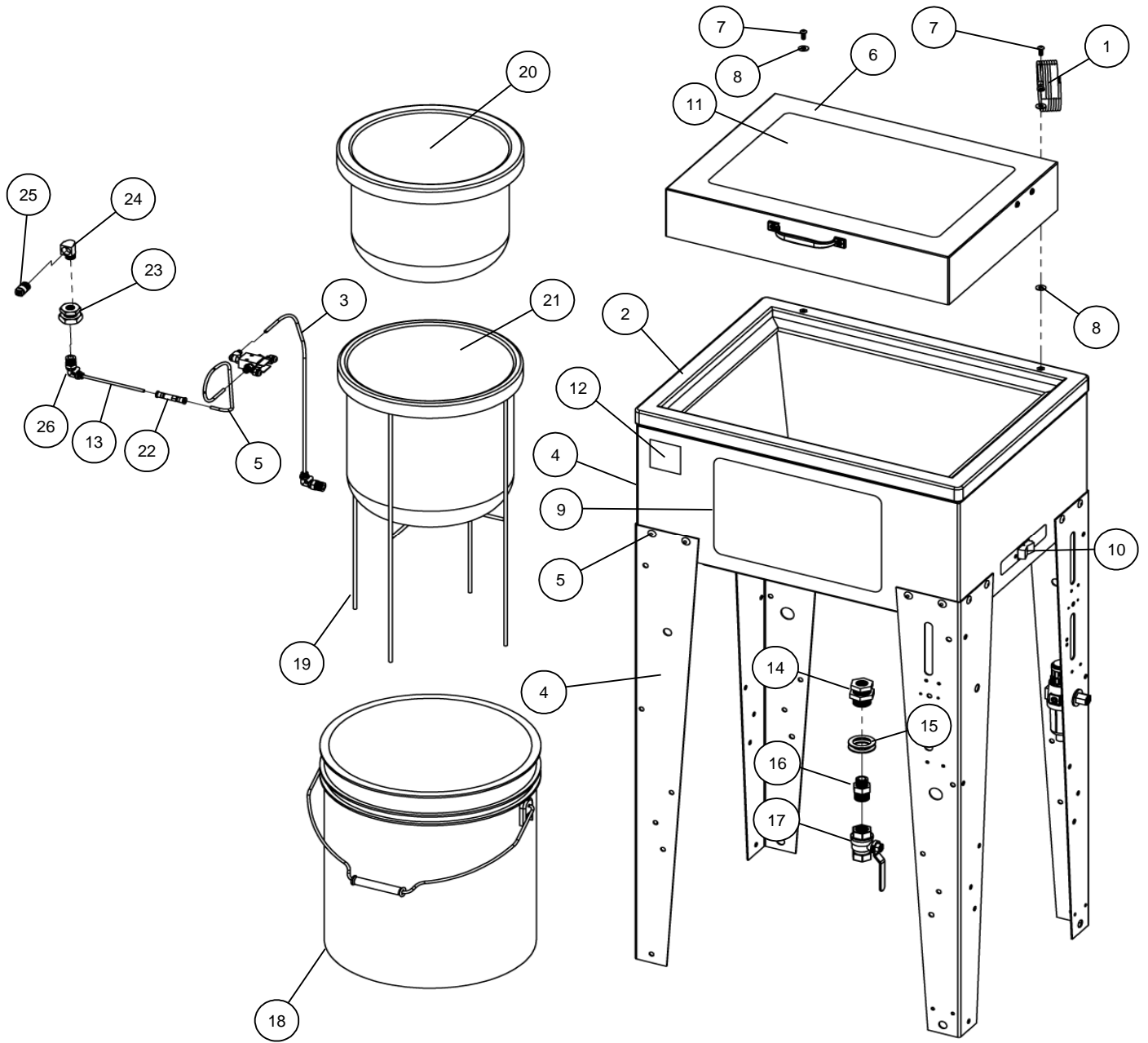
CAUTION
<p>Do not change the setting of the filter/regulator. This could damage the filter/regulator.</p>



Troubleshooting

Problem	Possible Solution
Agitator doesn't work	<ol style="list-style-type: none"> 1 Make sure air is connected to Recycler. 2 Make sure all air lines are attached. 3 Check to make sure there are no kinks in the air lines. 4 Make sure the switch on the side is set to Agitator.

R500 Parts Layout



R500 Parts Layout

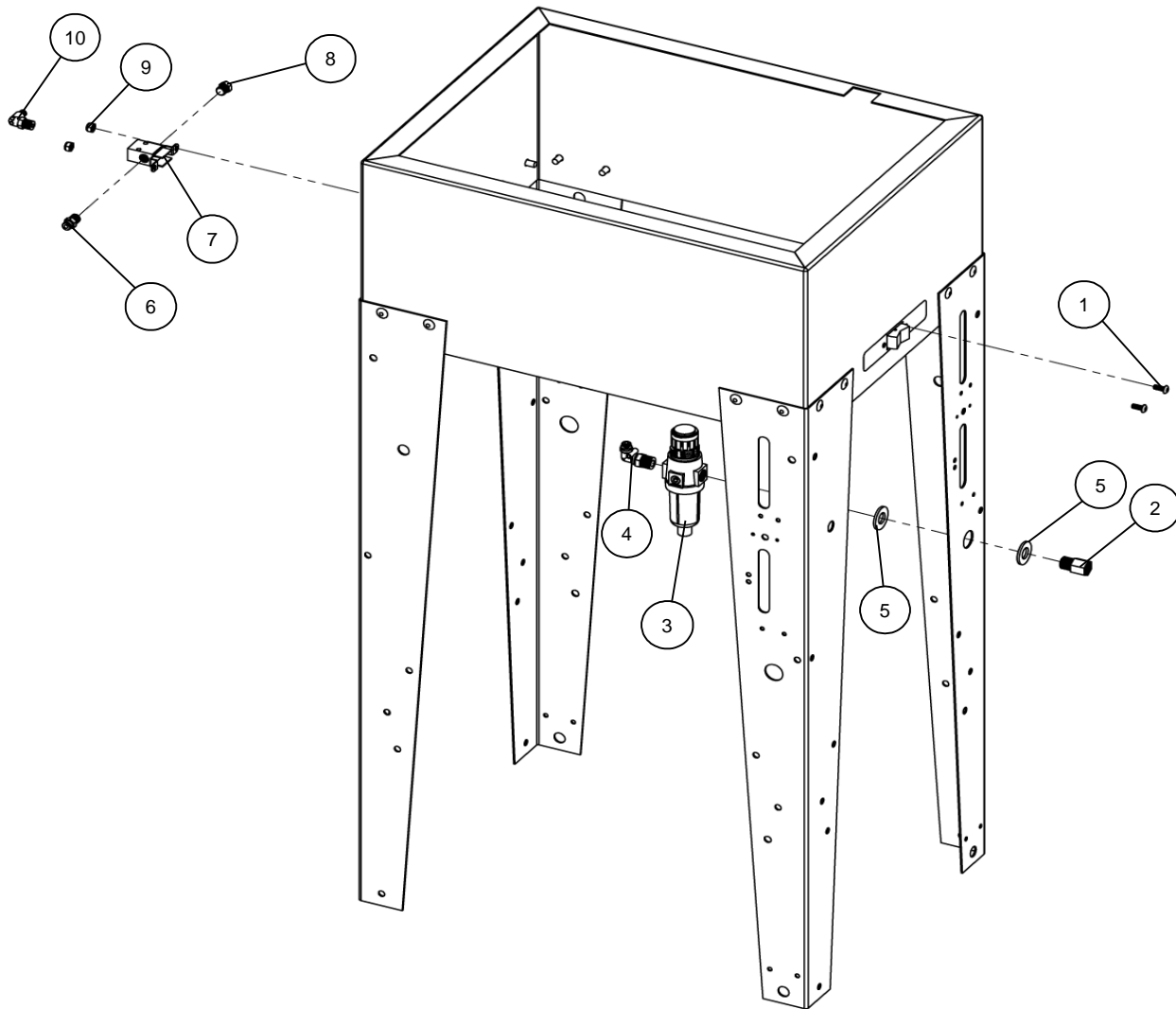
	Part #	Description	Quantity	
1	002-120A-72	Grounding Wire x 72" Long	1	EA
2	19669	Tub	1	EA
3	M5	Tube 5/32 Nylon Blue	17	IN
4	14604	Stand Assembly with Regulator	1	EA
5	M5	Tube 5/32 Nylon Blue	15	IN
6	19700	Lid	1	EA
7	1002546	Screw BHSC 10-24 x 1/2	2	EA
8	002-161	Flat Washer #10	4	EA
9	1004392	Sticker Front Recycler GWR	1	EA
10	1004425	Sticker Agitator/Off Toggle	1	EA
11	1004423	Sticker Top Lid Recycler GWR	1	EA
12	1004400	Decal Herkules R500 Brand	1	EA
13	M5	Tube 5/32 Nylon Blue	4	IN
14	1002644	Bulkhead 1 - Brass	1	EA
15	85B	Washer 1-1/2 x 1 Nylon	2	EA
16	62	Reducer 1/2 NPT X 3/8 NPT	1	EA
17	6	Ball Valve	1	EA
18	1002914	Bucket	1	EA
19	1002967	Filter mount frame	1	EA
20	1003348	Filter inner	1	EA
21	1003351	Filter outer	1	EA
22	1000524	Check Ball Inline For 5/32 Hose	1	EA
23	1002643	Bulkhead 3/4 - Brass	1	EA
24	1002779	Elbow Street 1/4 NPT Brass	1	EA
25	002-134	Nozzle 1/4 NPTM Brass	1	EA
26	T25	Fitting PTC 90D Swivel 5/32 T x 1/4 NPT	1	EA

Consumables Replacement Options

1	13835	Inner Filter Replacement - 5 Pack	1	EA
2	13836	Outer Filter Replacement - 5 Pack	1	EA
3	CA01	CoAgent Flocculant 2 kg	1	EA

Note: For parts shown but not identified refer to assembly layouts on page 10

R500 Stand Assembly



	Part #	Description	Quantity
1	1002546	Screw BHSC 10-24 x 1/2	2 EA
2	67	Adaptor 1/4 NPT Brass	1 EA
3	11345	Filter / Regulator	1 EA
4	T25	Fitting PTC 90 Degree Swivel 5/32 T x 1/4 NPT	1 EA
5	85D	Flat Washer 1/2 SAE Zinc	2 EA
6	T4	Hose Fitting 5/32 X 1/8 NPT	1 EA
7	1002912	Toggle valve	1 EA
8	59	Plug Hex 1/8 NPT Brass	1 EA
9	005-137	Nut Nylock 10-24 Z	2 EA
10	002-129	Hose Fitting 90° 5/32 x 1/8 NPT	1 EA

Note: Parts are shown for reference purposes only and are not necessarily part of a Herkules assembly.