



*Straight Vertical Lifting Power with*

# Vehicle Lifts

*Selecting the Right Lift is Essential to a Shop's Success.*

“Saving money” with a lift that wears out and falls apart has its costs: replacement parts, unplanned downtime, and staff unwilling or unable to use the inexpensive but unreliable lift. If you don't want vehicle lifts to have a regular place on your annual budget, **buy the lift that lasts.**

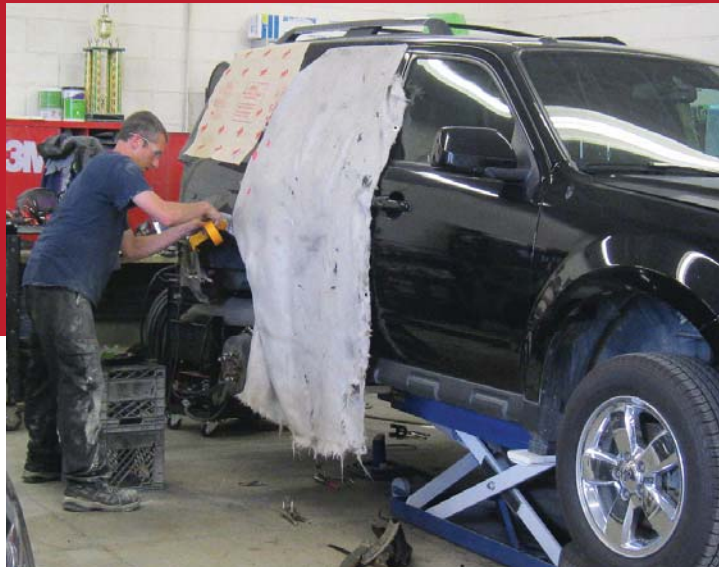
Providing a pure vertical lift, BossLifts by Herkules vehicle lifts move cars, vans and SUVs with ease and stability. The BossLifts by Herkules vehicle lift line provides support for all types of automotive-focused work: auto body repair, detailing, windshield repair, inspection, vinyl wrapping, graphic wrapping, tire rotation, brake work—any task that requires strong, dependable lifting power.

Our patented air-bag technology serves as the main lifting force for the majority of our lifts, adding years of life to the scissors. And the inflation safety valve is standard, providing protection against air bag over-inflation.

BossLifts by Herkules vehicle lifts are proudly made in the USA with American steel.



# Straight, Vertical Lifting That Powers Shops



**Give Techs a Raise**  
By bringing work to their level  
with BossLifts pneumatic options.  
VLA05 - 28.75" raised height  
K900 Series - 29" raised height  
L1200 Series - 36" raised height  
VLA04 - 42" raised height

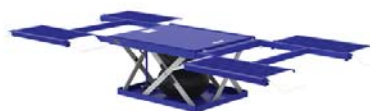
*Ergonomics are not just for manufacturing plants; investing in quality equipment that positions a vehicle at the preferred working height for each job decreases tech strain, and reduces cycle times, which means more customers can be serviced each day, in each bay.*

Take a lift to where it is needed—in, or just outside—of the shop. With BossLifts portable options, shops can easily move lifting power to where it is needed.

**A VEHICLE LIFT built to last makes downtime a thing of the past.**



L1200S



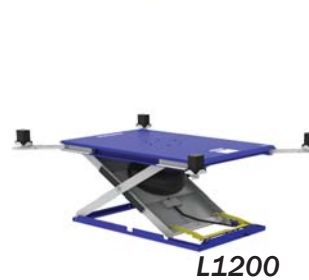
K900S

Suspend, even end, loading times with BossLifts K900S and L1200S drive-on/drive-off lifts, with no lifting blocks to position. The four removable loading ramps can also pivot upward and lock in place, serving as wheel chocks.



K900

VLA05



L1200



VLA04



K900P



L1200P





# Steps to Greater Productivity and Profits



VLA03

*Superior Pneumatic Dual Platform Lifts provide Powerful, Dependable and Safe Lifting for Oil and Lube Shops*

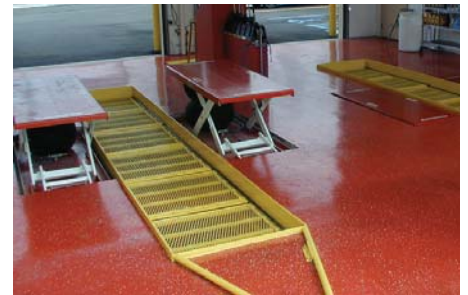
When turn-around time impacts the bottom line, BossLifts dual platform lifts move vehicles with speed and confidence. The VLA03 and VLA06 feature ramps that simplify loading, and crossbars, metal height extenders and rubber blocks that support powerful and dependable lifting.



VLA06

## Power Greater Profits with Improved Ergonomics

		INCREASED ANNUAL EARNINGS					
		Number of technicians					
		1	3	5	8	10	
productivity Increase	1%	\$700	\$2100	\$3500	\$5600	\$7,000	
	2%	\$1,400	\$4,200	\$7,000	\$11,200	\$14,000	
	5%	\$3,500	\$10,500	\$17,500	\$28,000	\$35,000	
	8%	\$5,600	\$16,800	\$28,000	\$44,800	\$56,000	
	10%	\$7,000	\$21,000	\$35,000	\$56,000	\$70,000	
	12%	\$8,400	\$25,200	\$42,000	\$67,200	\$84,000	
	15%	\$10,500	\$31,500	\$52,500	\$84,000	\$105,000	
	18%	\$12,600	\$37,800	\$63,000	\$100,800	\$126,000	
	20%	\$14,000	\$21,000	\$35,000	\$56,000	\$140,000	
	25%	\$17,500	\$52,500	\$87,500	\$140,000	\$175,000	



Note: the dollar amounts are based on each tech generating \$70,000 annually.

VLA01



## Hydraulic-Powered Heavy Duty Lifting

The VLH01 provides Herkules strength and reliability with hydraulic power. Lift up to eight thousand pounds by the frame with confidence, as safety stops provide additional support.

## Lift over Two Tons Anywhere in the Shop with Ease

Air Jacks by BossLifts deliver 4500 lb. lift capacity and are 100% air operated,

AJ2: lowered height - 6.5 inches, raised height - 13 inches

AJ3: lowered height - 7.875 inches, raised height - 19.25 inches.

Both Air Jacks have optional extenders and adapters available. (pictured at right)



## Quick Reference Chart

Section	Model	Capacity lbs	Lowered	Travel in	Raised	Controller	Platform Size		Base Size in x in	Ship Weight lbs
			Height in		Height in		Width in	Length in		
1	VLA03	10000	4.125	10.5	14.625	Hand	16	50	16 x 50*	480
2	VLA04	6000	4.625	37.375	42	Foot	39	60	39 x 60	800
3	VLA05	6000	4.25	24.5	28.75	Foot	39	50	39 x 50	650
4	VLA06	10000	4.25	24.75	29	Hand	68	101	31 x 68*	2300
5	VLH01	8000	4.625	27.375	32	Hand	19	54	19 x 54*	1550
6	L1200	6000	4.5	31.625	36.125	Foot	44	67	36 x 62	1020
7	L1200P	6000	4.5	31.625	36.125	Foot	44	67	36 x 79	1050
8	L1200S	5000	4.173	31.625	35.798	Foot	80	151	36 x 62	1550
9	K900	6000	4.125	24.875	29	Hand	38	50	38 x 49	820
10	K900P	6000	4.125	24.875	29	Hand	38	50	38 x 67	830
11	K900S	5000	3.25	24.875	28.125	Hand	79	151	79 x 49	1500
12	K900W-40	4000	6.321	23.875	30.196	Hand	38	50	57 x 62	990
13	K900W-60	6000	6.321	23.875	30.196	Hand	38	50	38 x 50	1010
14	VLA10	8000	4.673	31.125	35.798	Foot	82 - xx	185 - xx	36 x 152	2800
15	VLA11	6000	6.790	31.375	38.165	Foot	44	67	44 x 73	1810
16	VLA07	8000	5	35.625	40.625	Hand	37	69	37 x 69*	2300
17	VLA08	6500	6	45.125	51.125	Foot	36	47	36 x 47	1100
18	VLA08S	5500	4.5	45.125	49.625	Foot	80	151	80 x 151	2200
19	VLA12	9000	4.5	45.125	49.625	Foot	80 - xx	233 - xx	80 x 233	3900
20	LOA01	330	10	29	39	Hand	36	78	41 x 78	940
21	LOA02	330	15	65	80	Hand	27	138	36 x 138	2100

Sizes with ( \* ) signify a tandem system, measurement is of one lift